

1 1/4 IN. (3.0cm) HEM ALLOWED

1

2

3

5
4

5

FOLD LINE

4
POCKET
CUT 1

McCall's
MB172
Misses Size 26-30

10

2
NECK BAND
CUT 2

McCall's
MB172
Misses Size 26-30

7

8

9

6

11

9
SLEEVE
CUT 2

McCall's
MB172
Misses Size 26-30

12

13

14

3
FRONT TIE END
CUT 2

15

16

17

18

19

20

1
FRONT
CUT 2

McCall's
MB172
Misses Size 26-30

22

23

24

25

21

22

23

24

25

WASTELINE

CASING LINE

3/8 IN. (1.5cm) SEAM ALLOWANCE

1 1/4 IN. (3.0cm) HEM ALLOWED

5/8 IN. (1.5cm) HEM ALLOWED

1 1/4 IN. (3.0cm) HEM ALLOWED

CENTER FRONT

WAISTLINE

FRONT SEAM ALLOWANCE
1 1/4 IN. (3.0cm)
AFTER FINISHING THE SEAM
AND PRESSING IT IN.

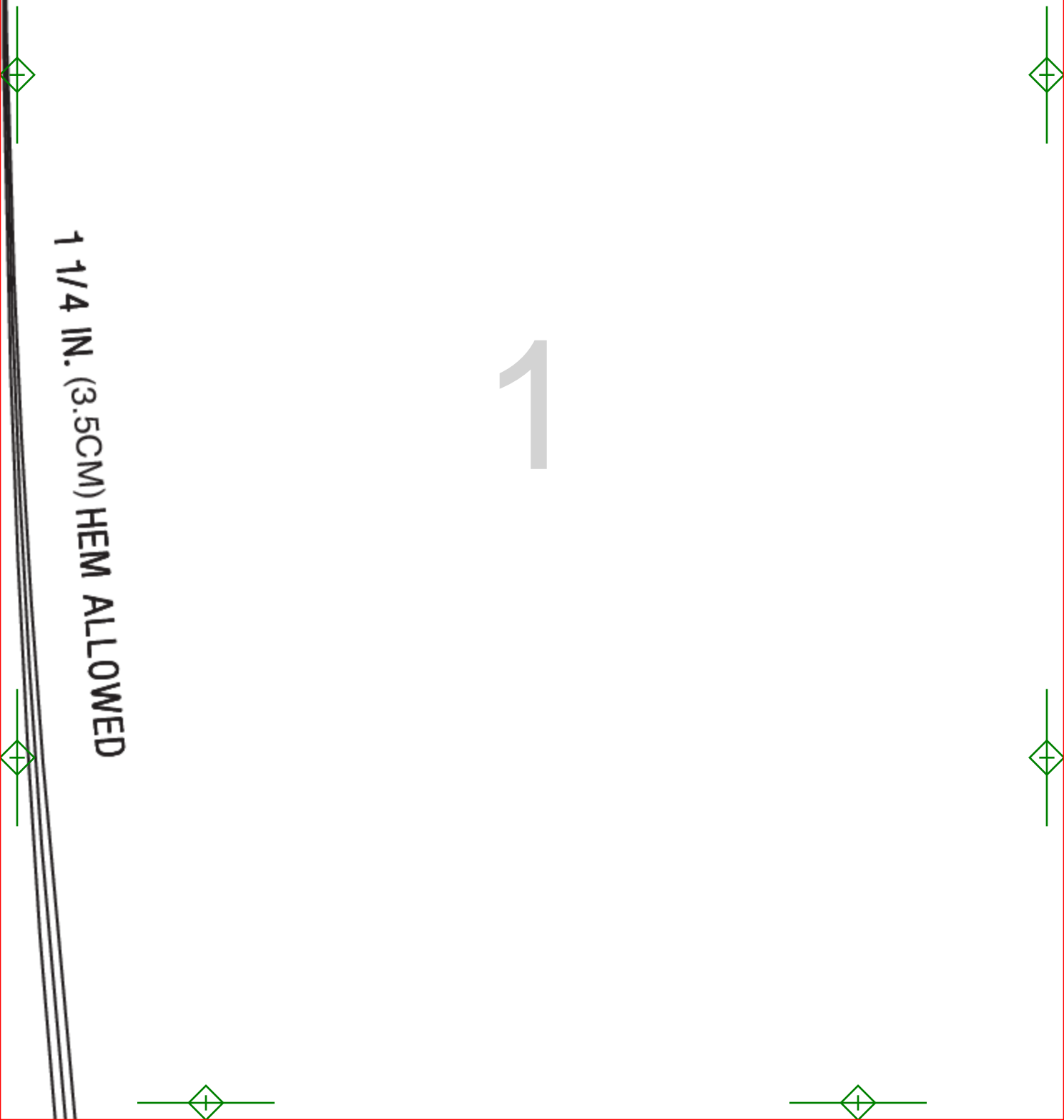
FRONT LEG RIGHT SIDE ONLY
FRONT LEG LEFT SIDE ONLY
FRONT LEG RIGHT SIDE ONLY
FRONT LEG LEFT SIDE ONLY
FRONT LEG RIGHT SIDE ONLY
FRONT LEG LEFT SIDE ONLY

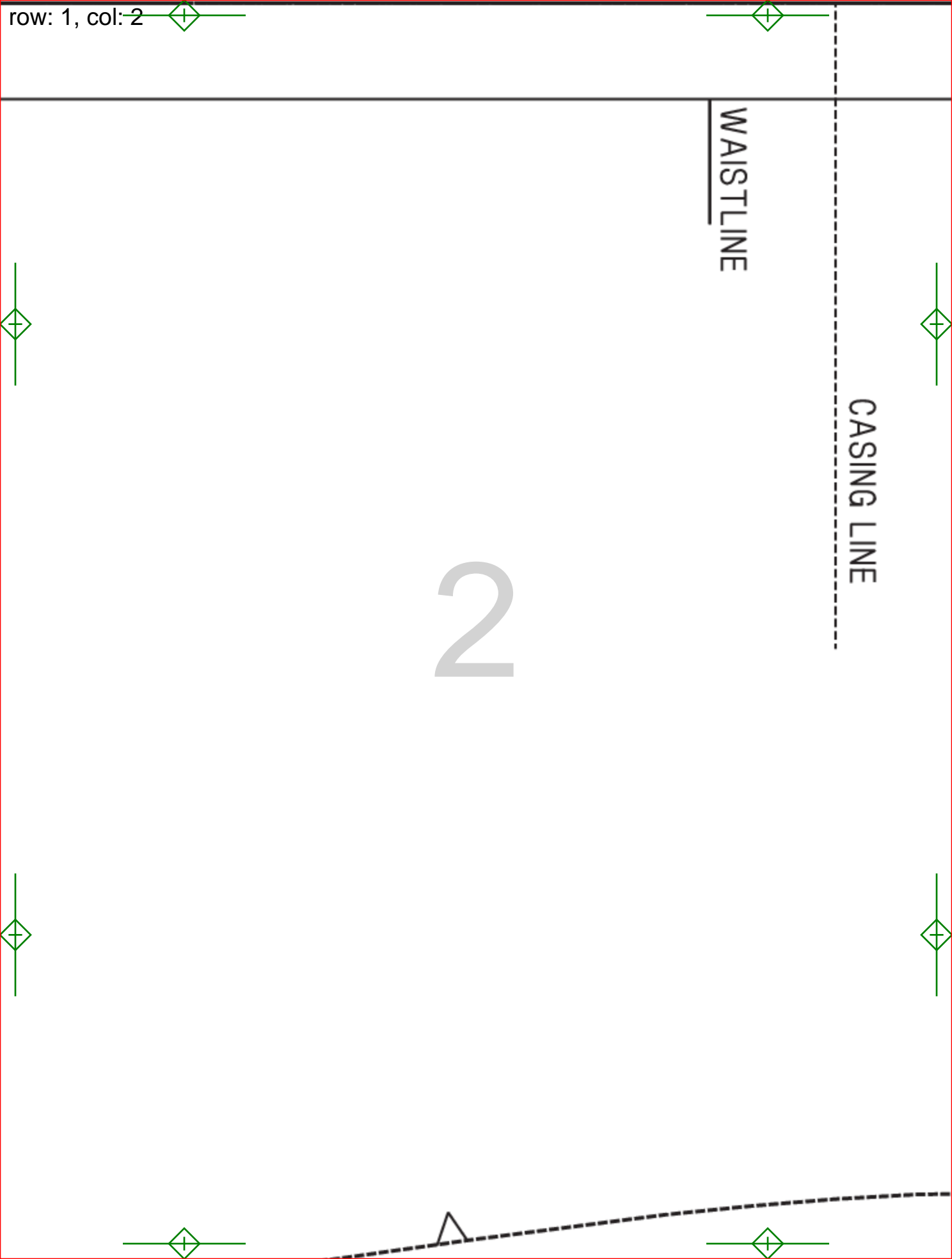
row: 1, col: 1



1

1 1/4 IN. (3.5CM) HEM ALLOWED

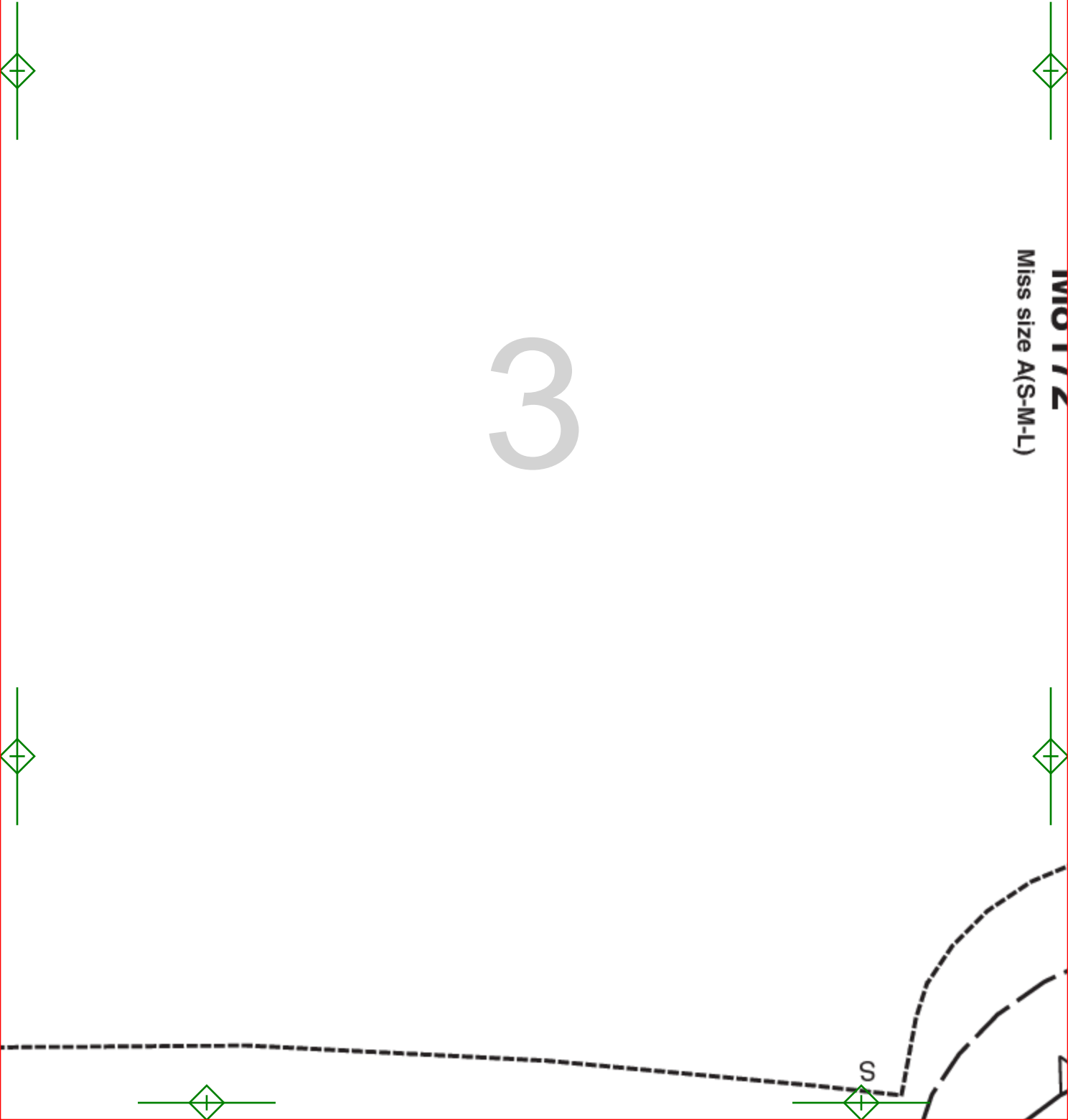




CENTER FOLD

Miss size A(S-M-L)

3



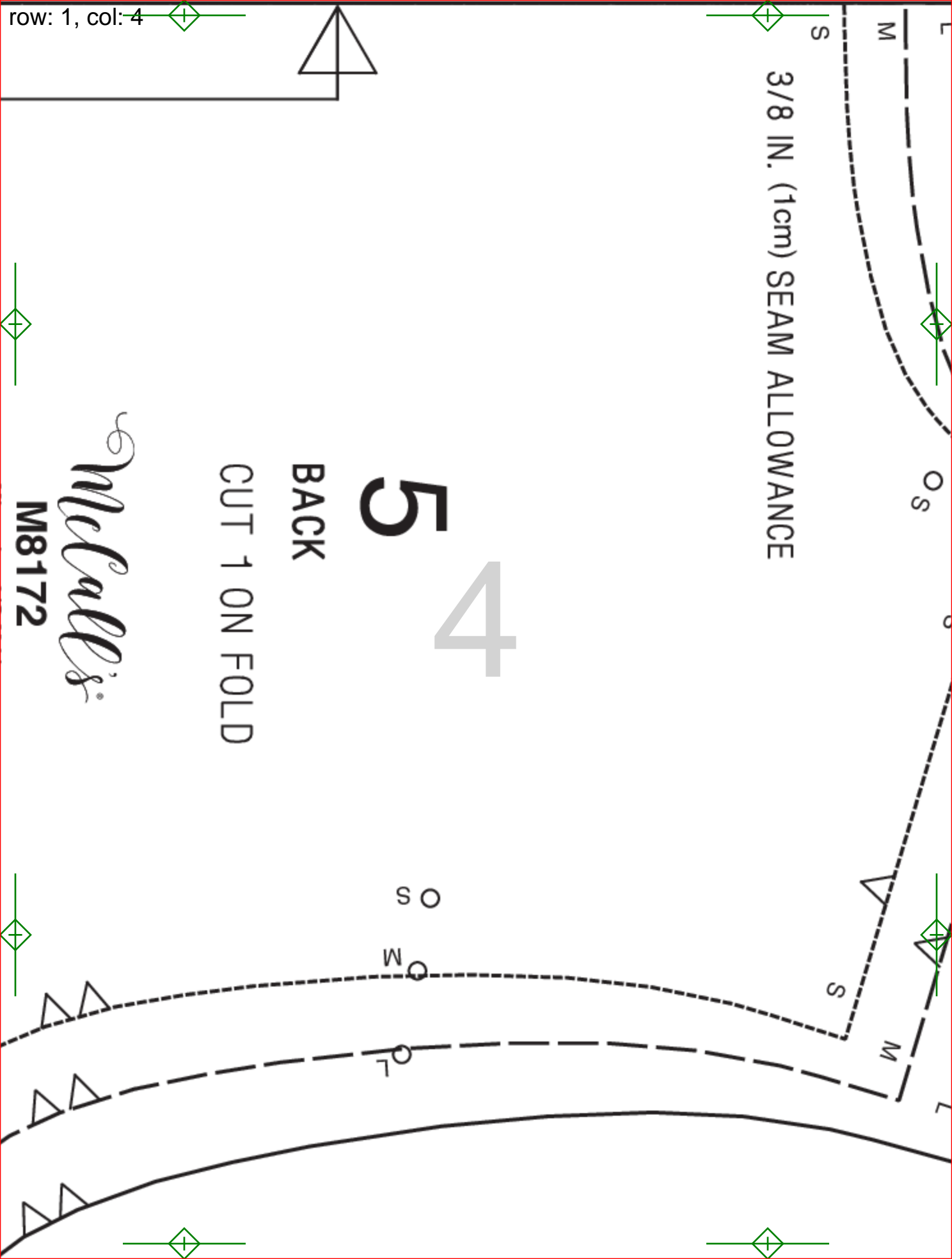
3/8 IN. (1cm) SEAM ALLOWANCE

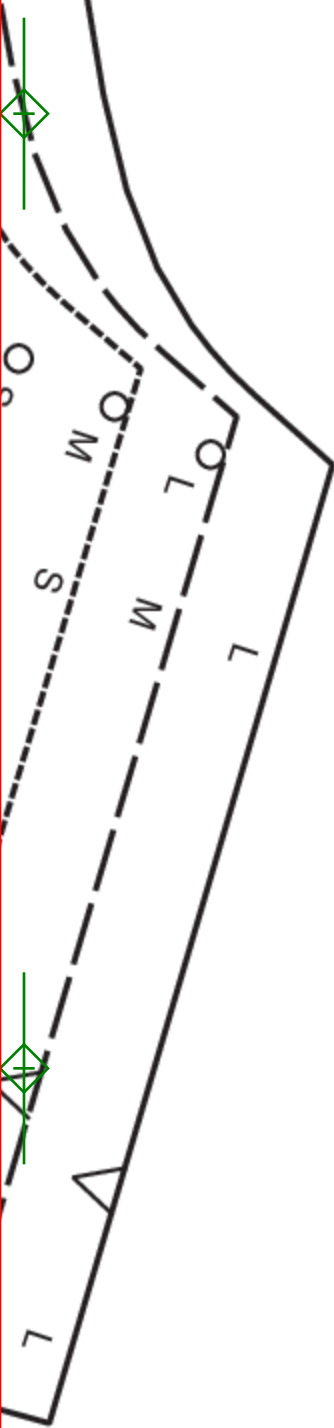
5
4

BACK

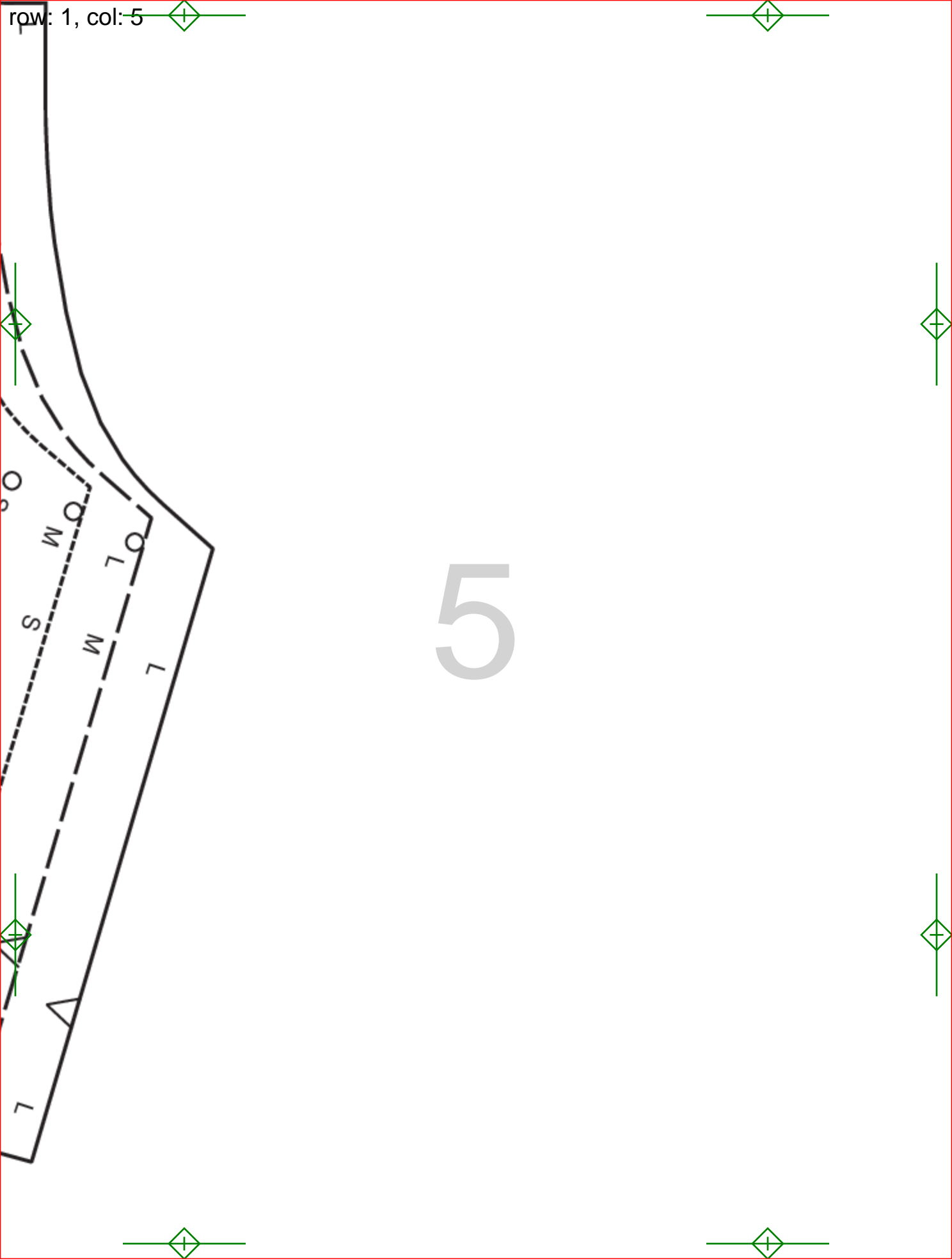
CUT 1 ON FOLD

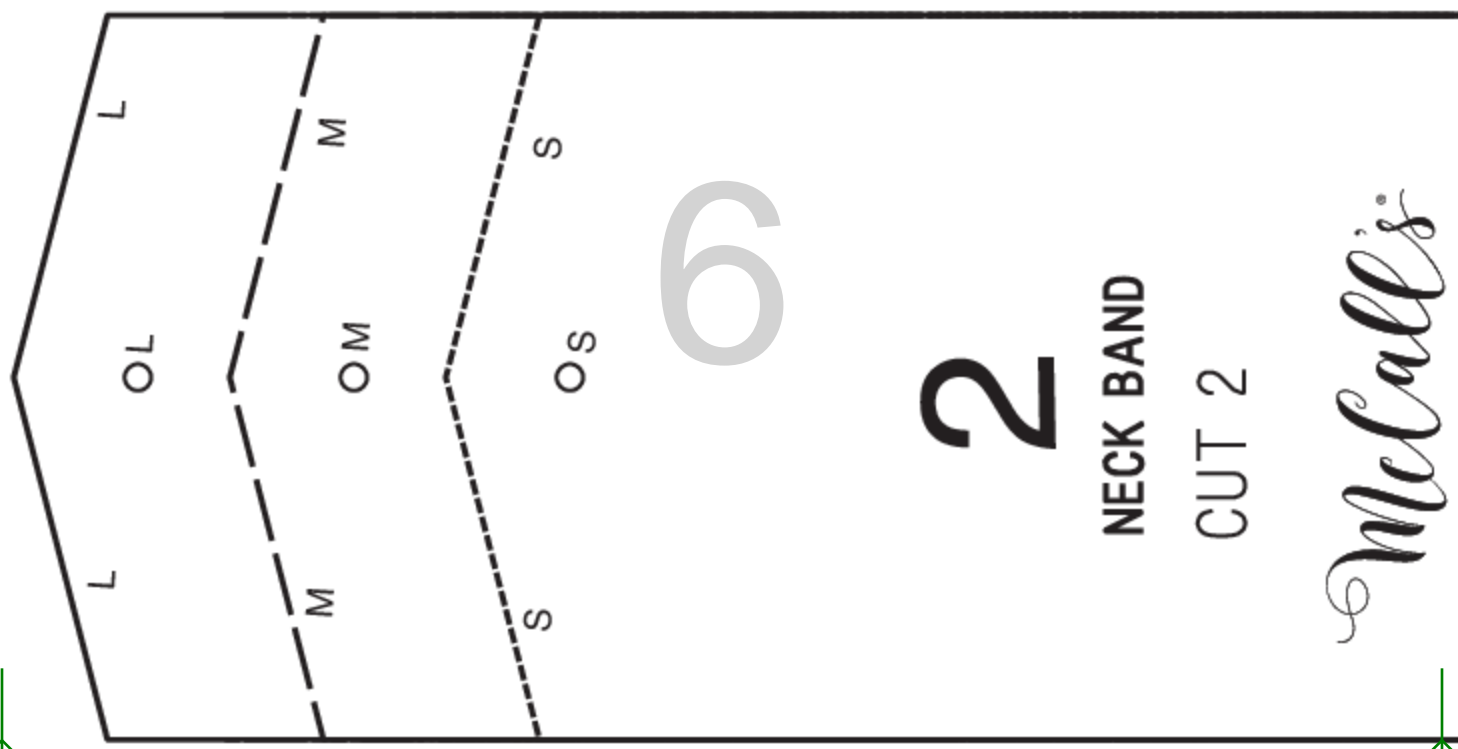
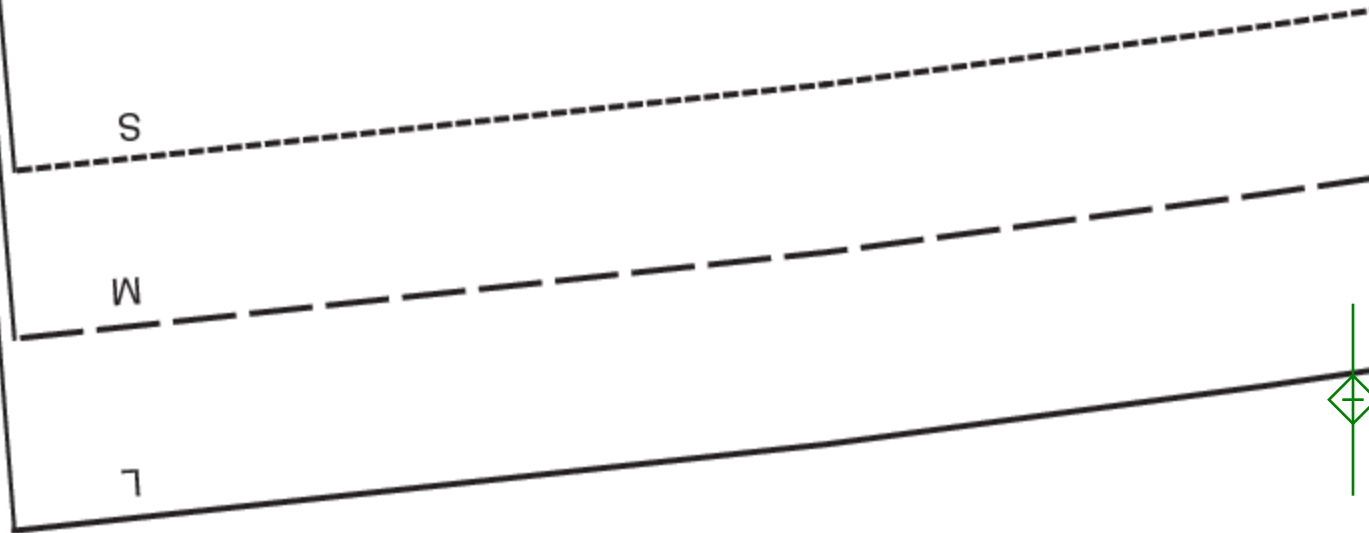
McCall's
M8172





5



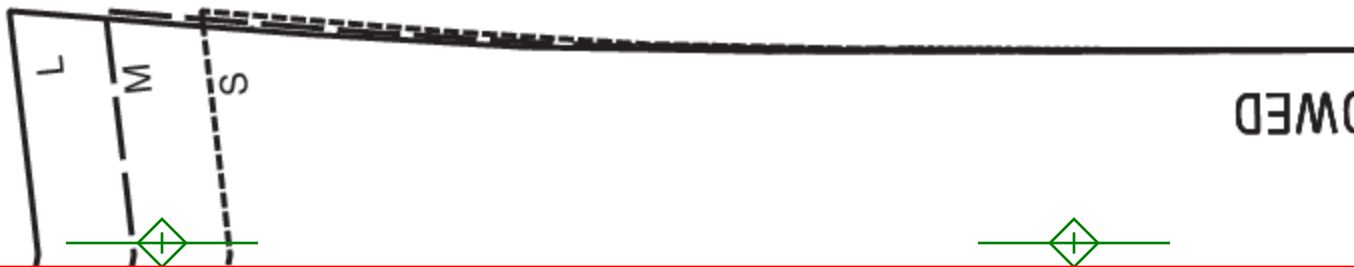


6

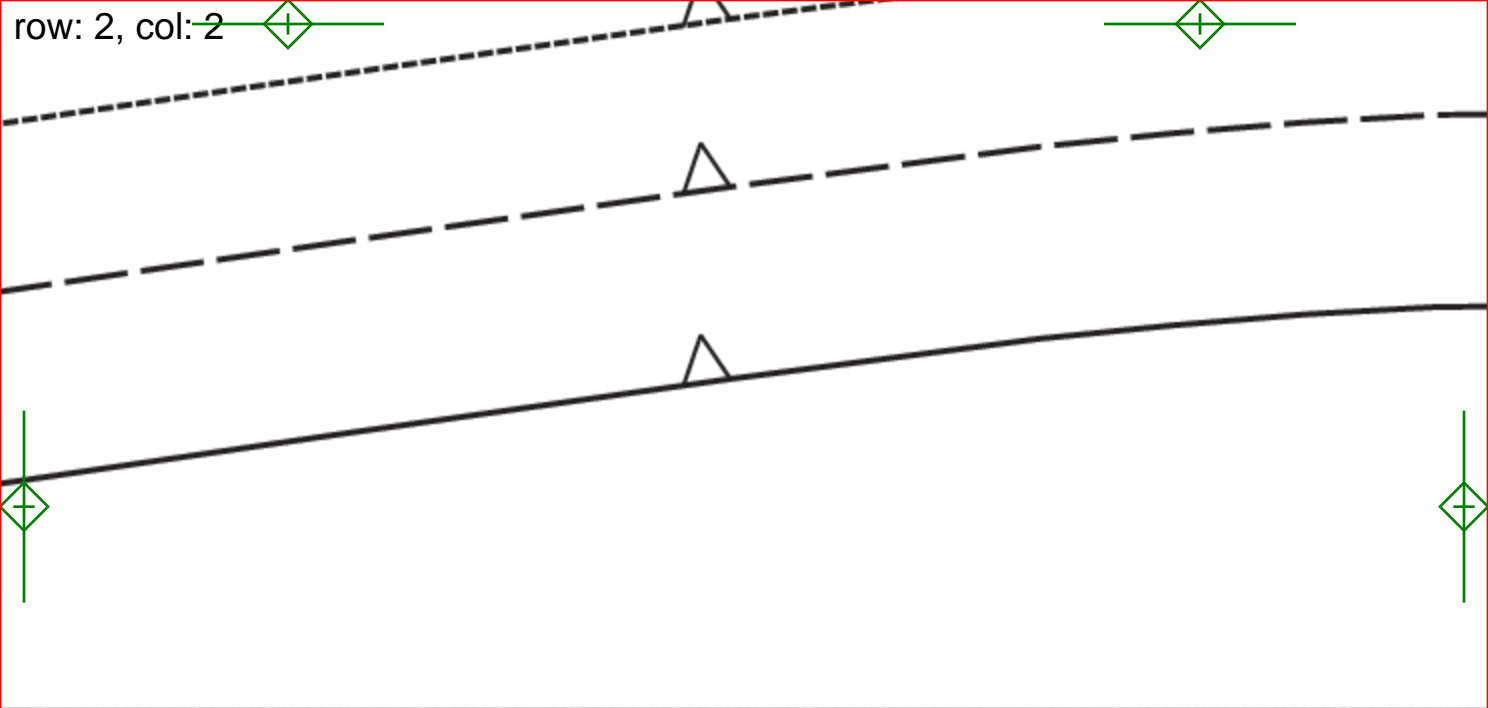
2

NECK BAND
CUT 2

McCall's



OWED

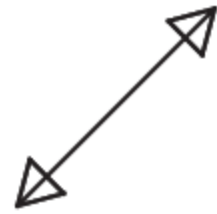


STRETCH

7

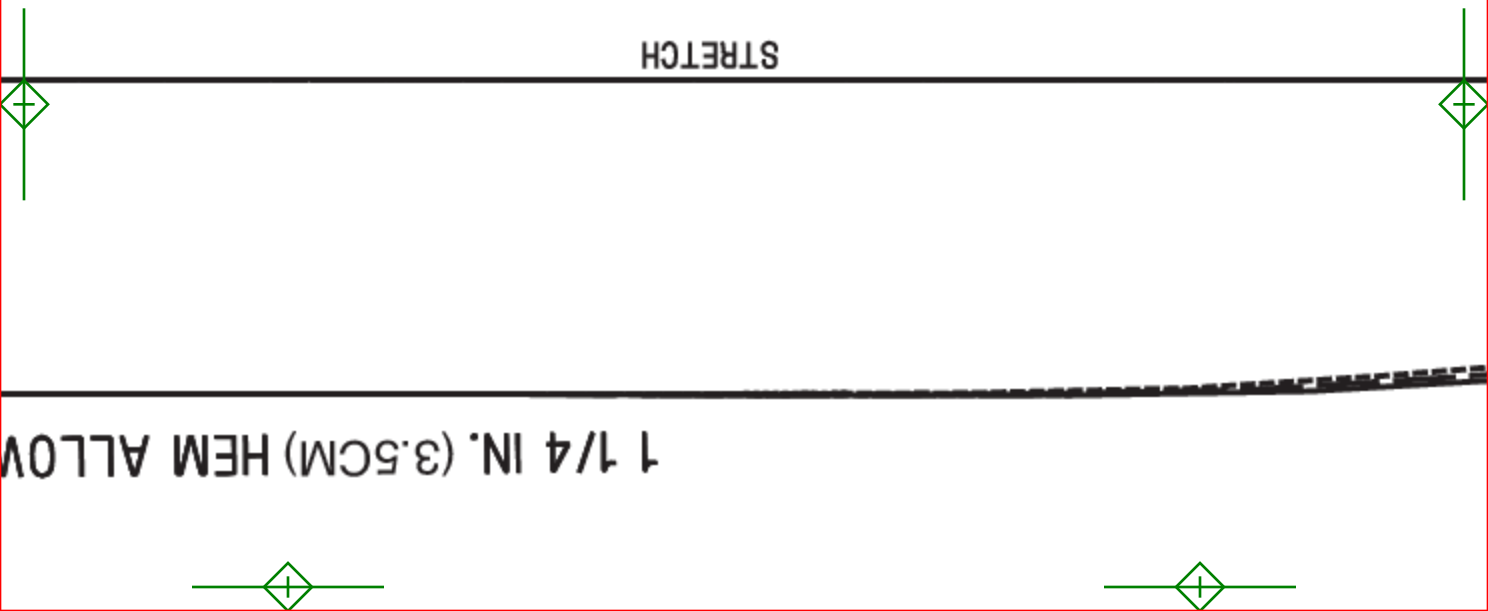
M8172

Miss size A(S-M-L)



STRETCH

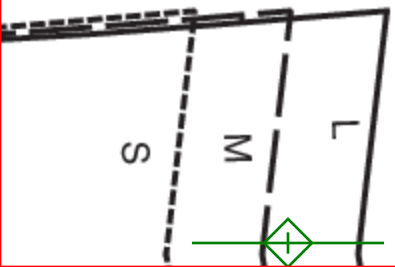
1 1/4 IN. (3.5CM) HEM ALLOW

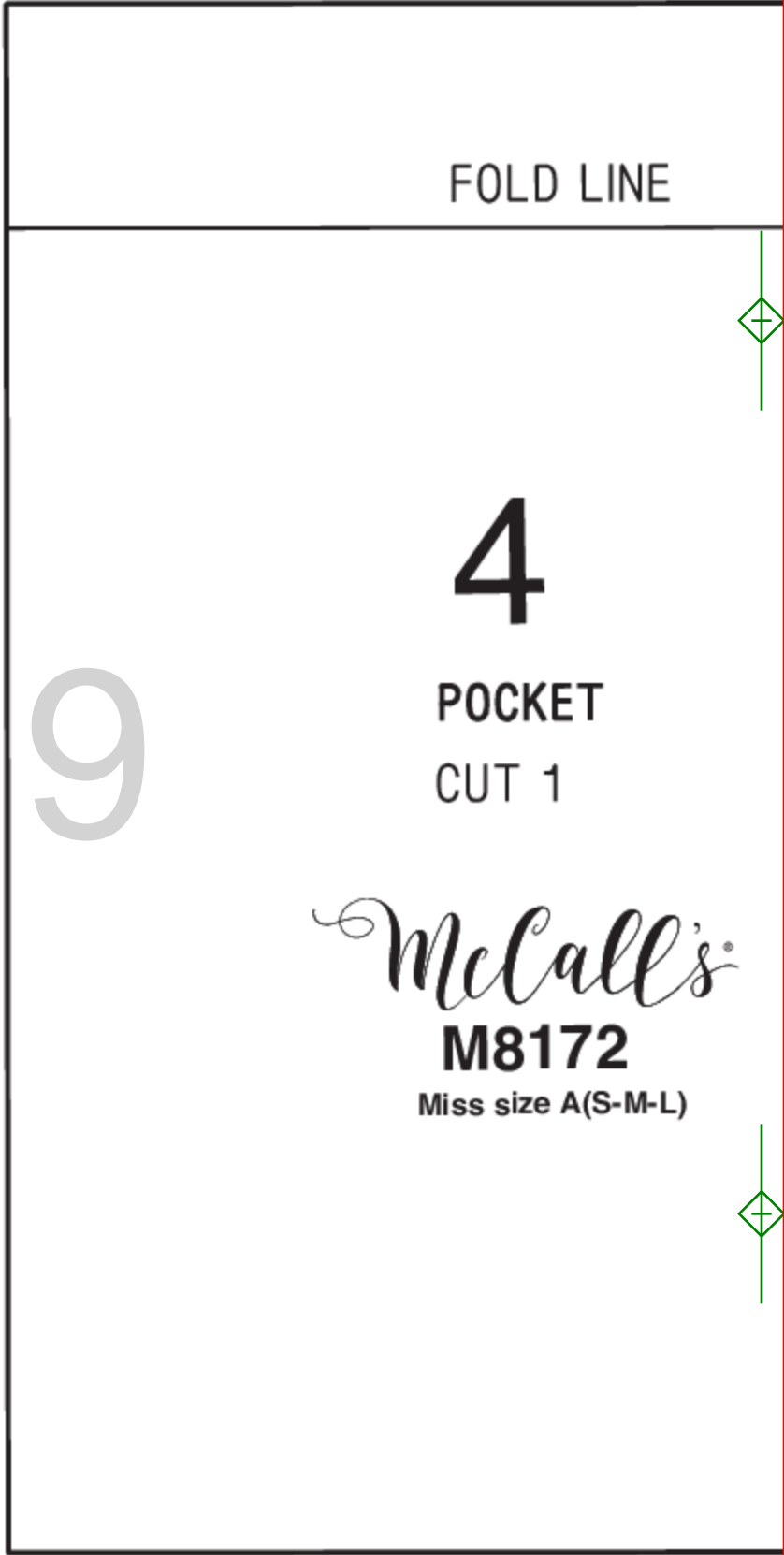
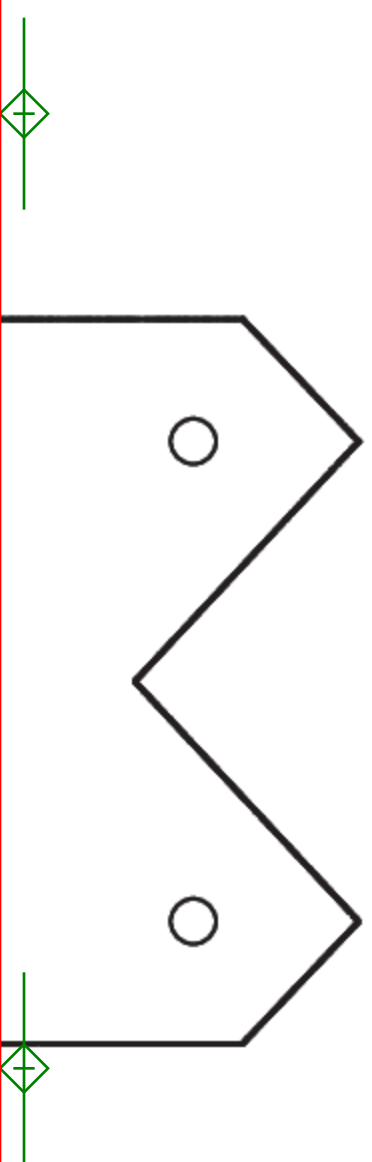


row: 2, col: 3



8





FOLD LINE

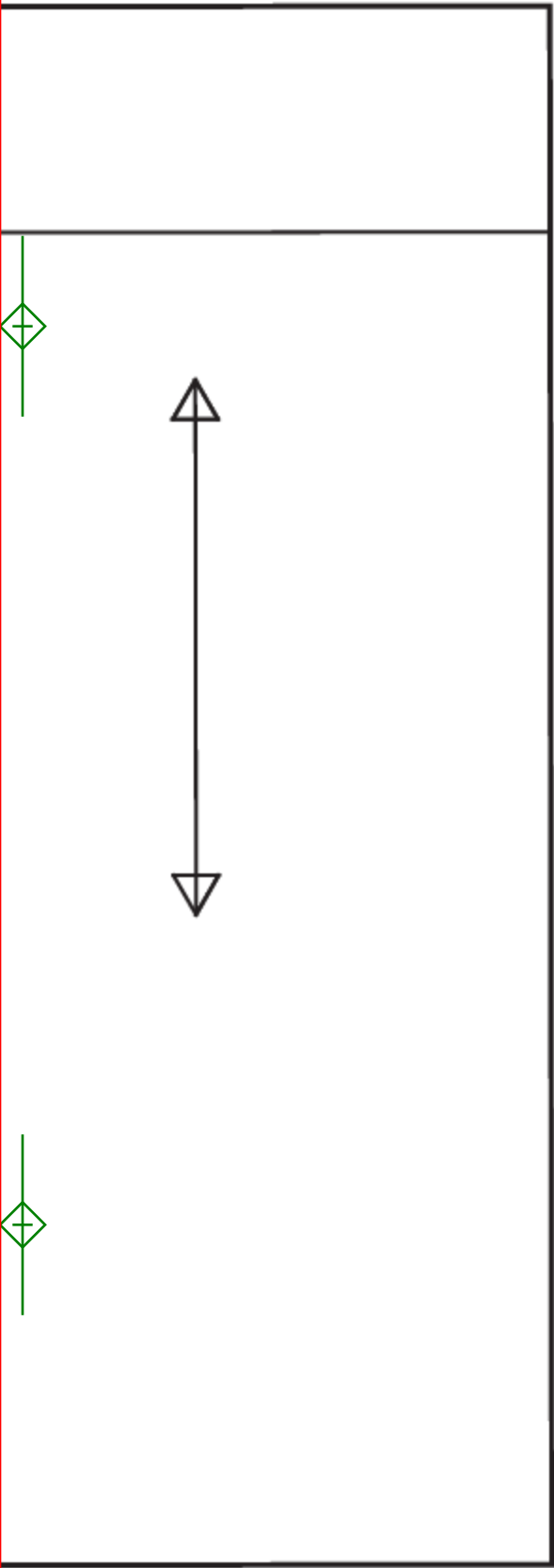
9

4

POCKET
CUT 1

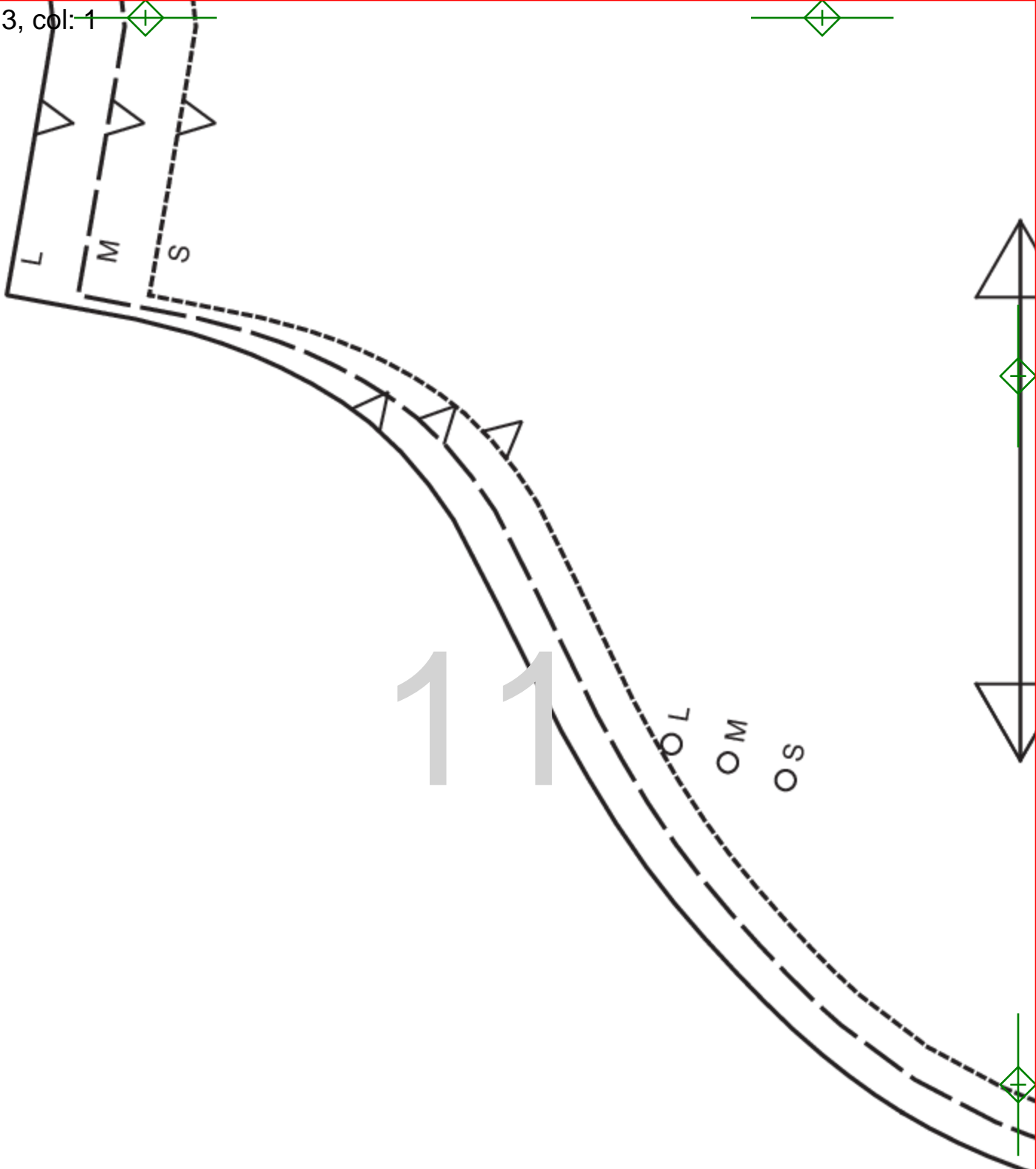
McCall's
M8172
Miss size A(S-M-L)

row: 2, col: 5



10

row: 3, col: 1



11

OL
OM
OS

Miss size A(S-M-L)

M8172

McCall's

SLEEVE
CUT 2

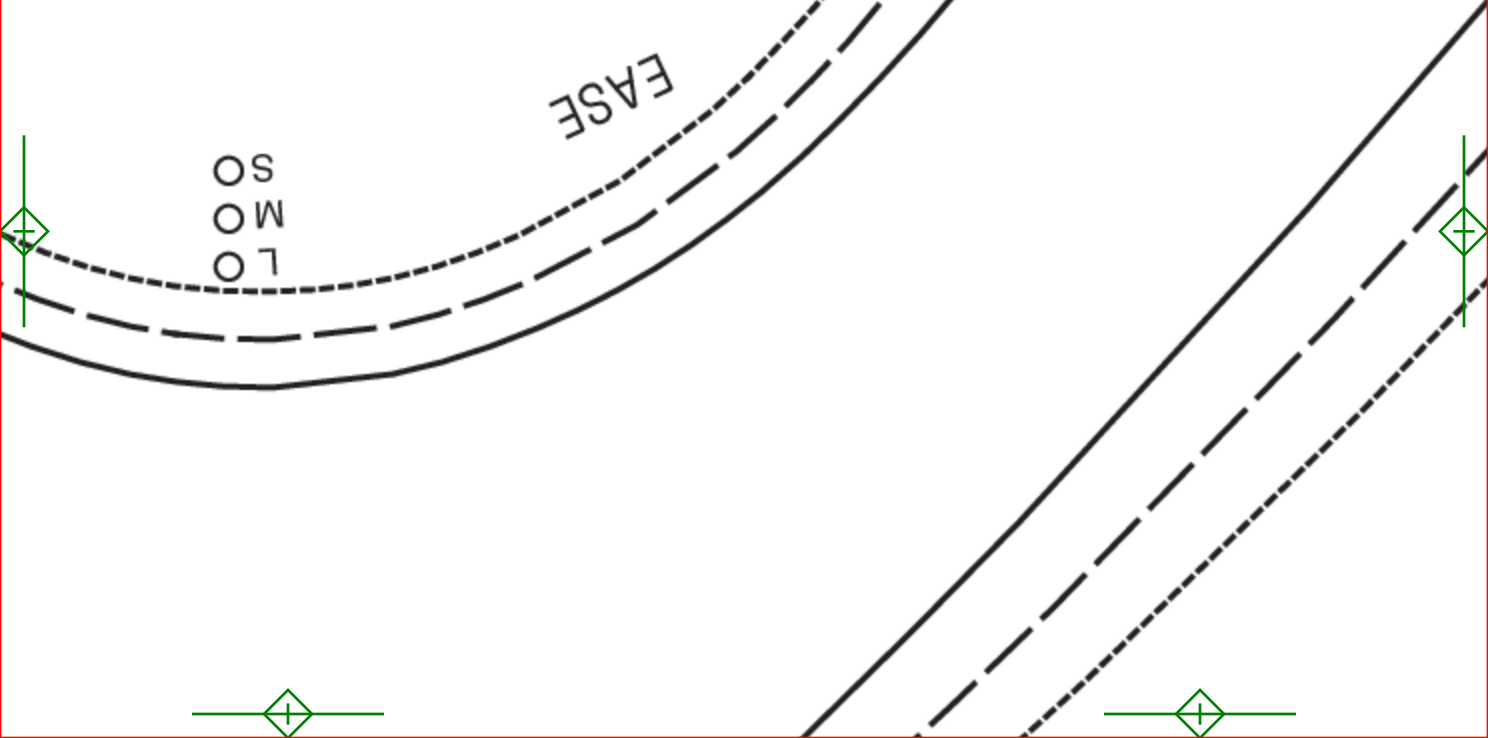
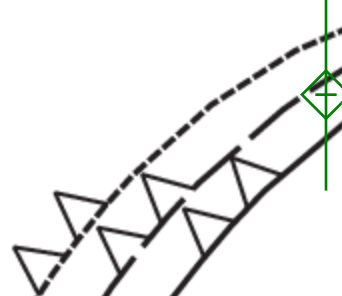
6

12

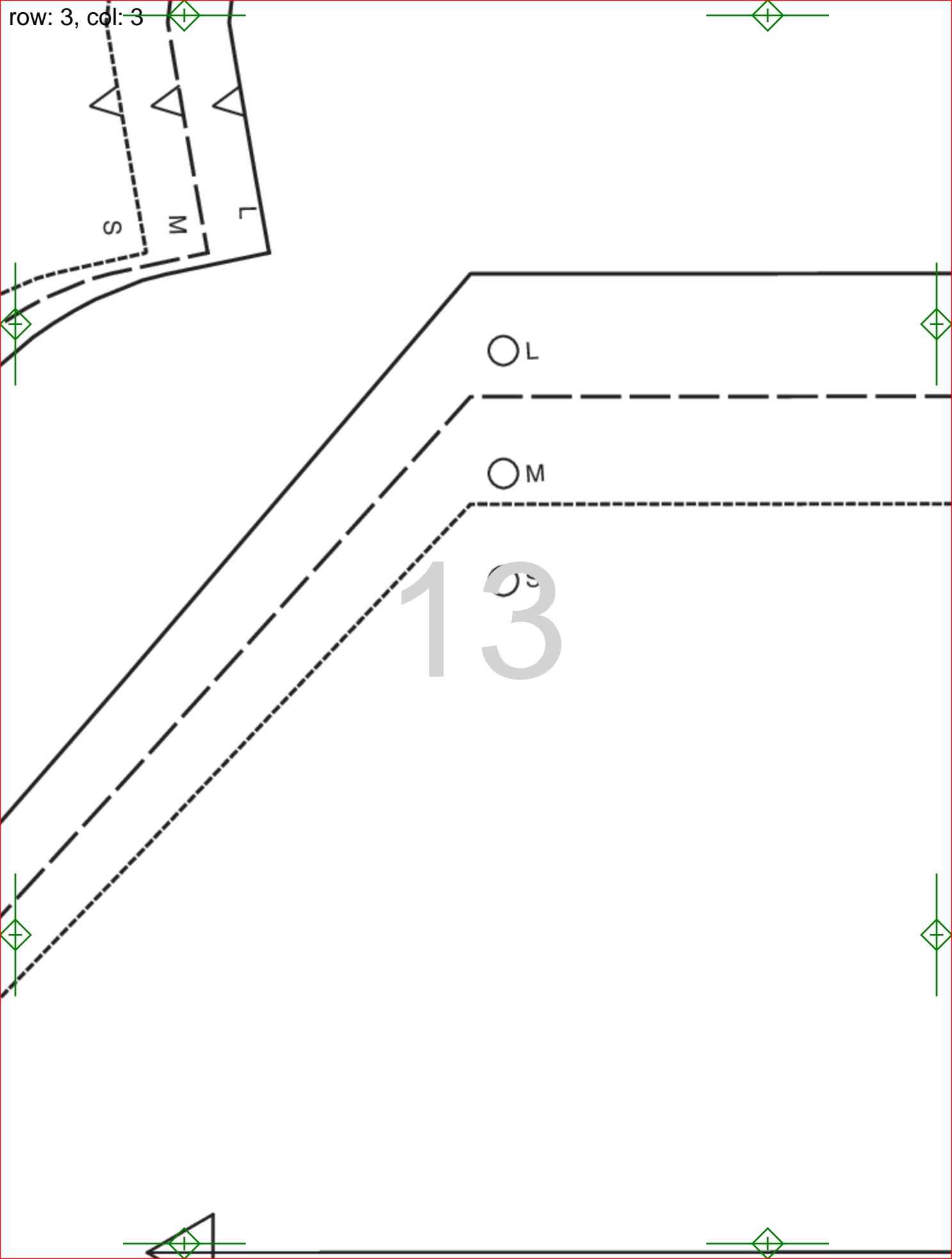
EASE

LO
MO
SO

LO
MO
SO



row: 3, col: 3



13



L



M



S

5/8 IN. (1.5cm) HEM ALLOWED

14



15

3

**FRONT TIE END
CUT 2**

McCa
M817
Miss size A



16

1

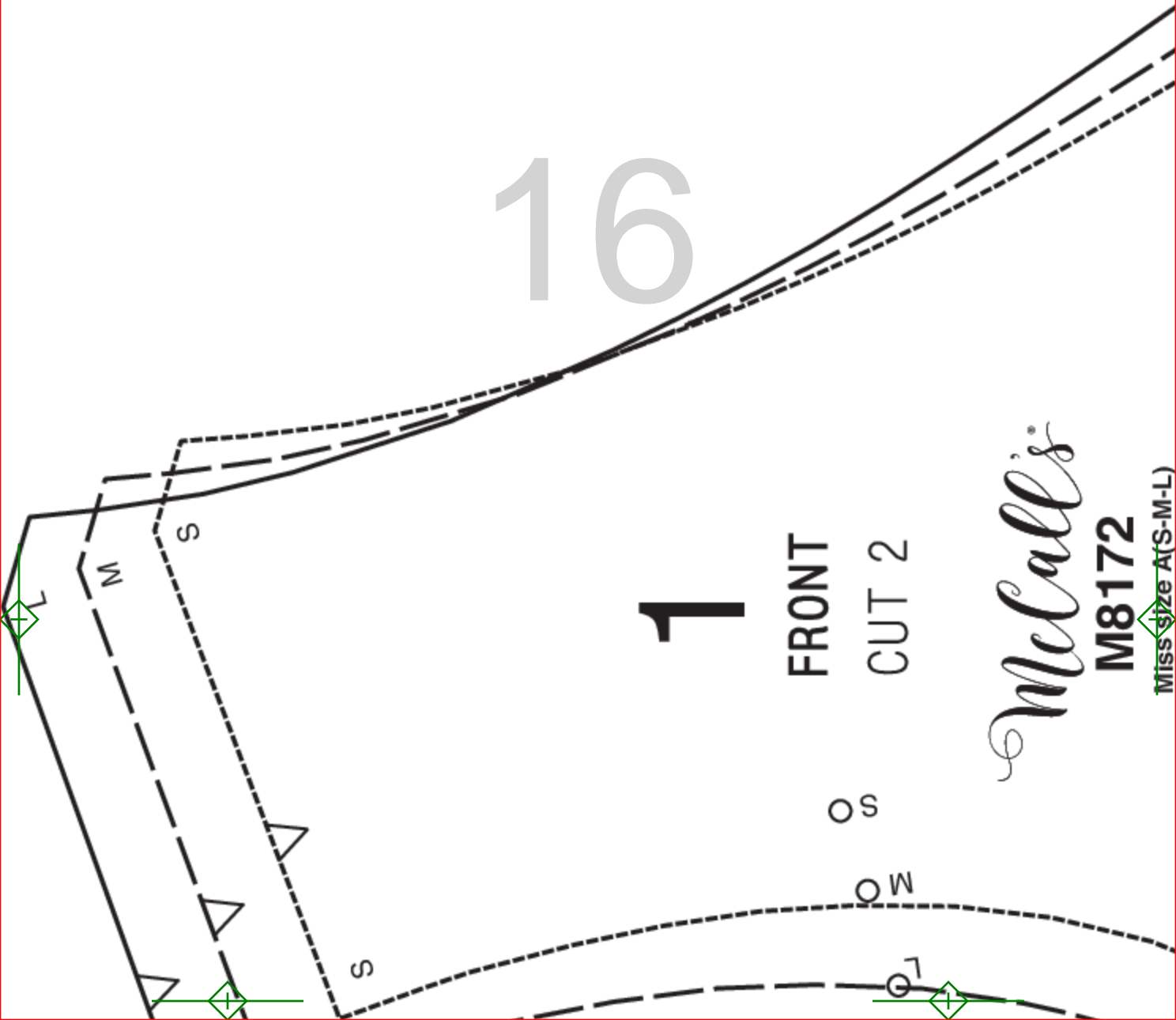
FRONT

CUT 2

McCall's

M8172

Miss Size A(S-M-L)



Miss Size A(S-M-L)

© 2020 a CSS Industries, Inc. brand
All Rights Reserved
Printed in U.S.A.

MENT MEASUREMENTS

(96.5 CM)

(106CM)

(116 CM)

BUST

4CM

S

N

L

CENTER FRONT

17

WAISTLINE

18





S

POCKET LINE RIGHT SIDE ONLY

M

POCKET LINE RIGHT SIDE ONLY

L

POCKET LINE RIGHT SIDE ONLY

19



S

POCKET LINE RIGHT SIDE ONLY



1 1/4 IN. (3.5CM) HEM ALLOWED

1772
A(S-M-L)

Call's



20



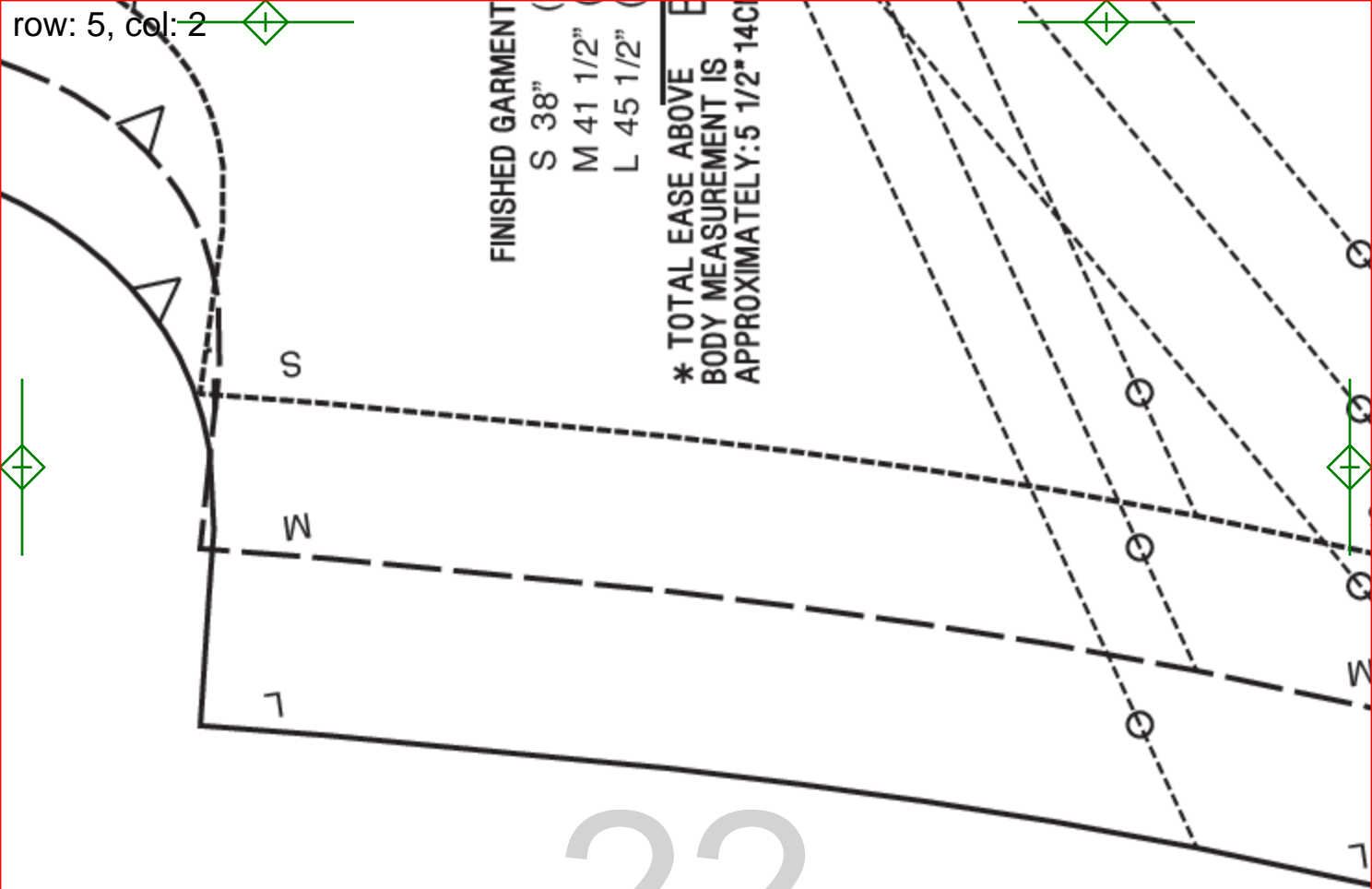


21

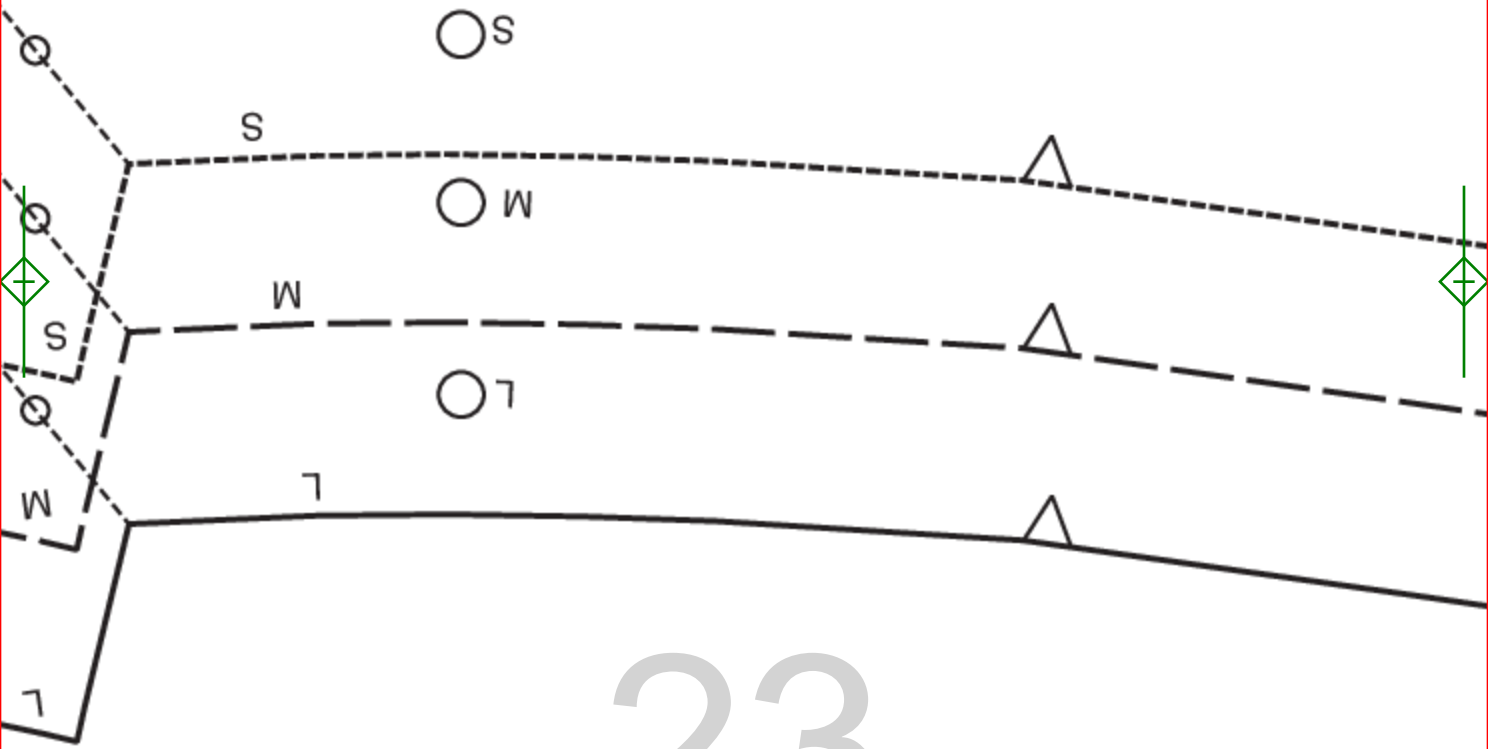


FINISHED GARMENT
S 38"
M 41 1/2"
L 45 1/2"

* TOTAL EASE ABOVE
BODY MEASUREMENT IS
APPROXIMATELY: 5 1/2" 14C



22



23

POCKET LINE RIGHT SIDE ONLY

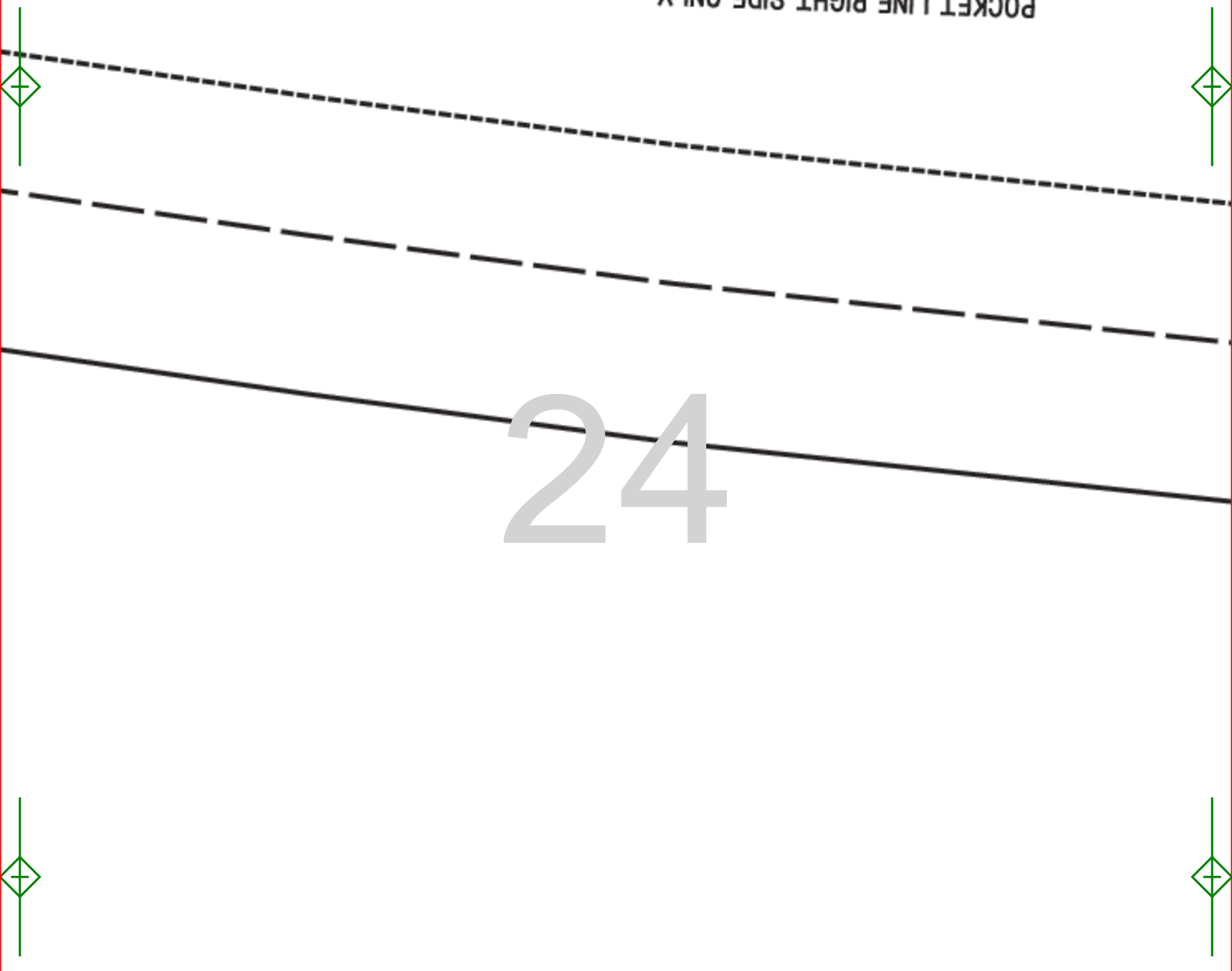
M

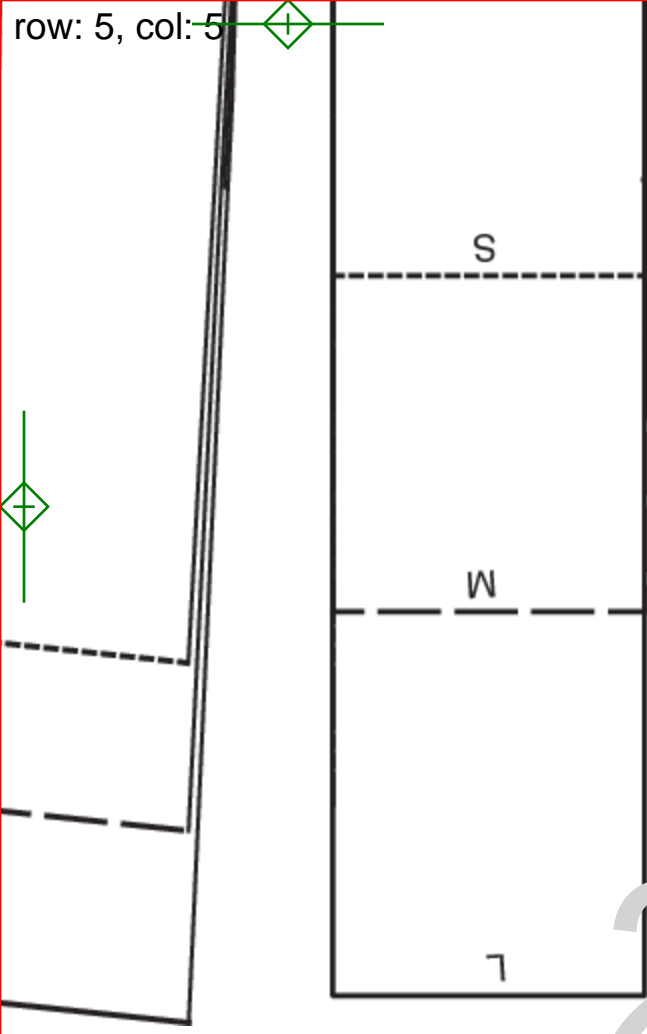
POCKET LINE RIGHT SIDE ONLY

L

POCKET LINE RIGHT SIDE ONLY

24





25

