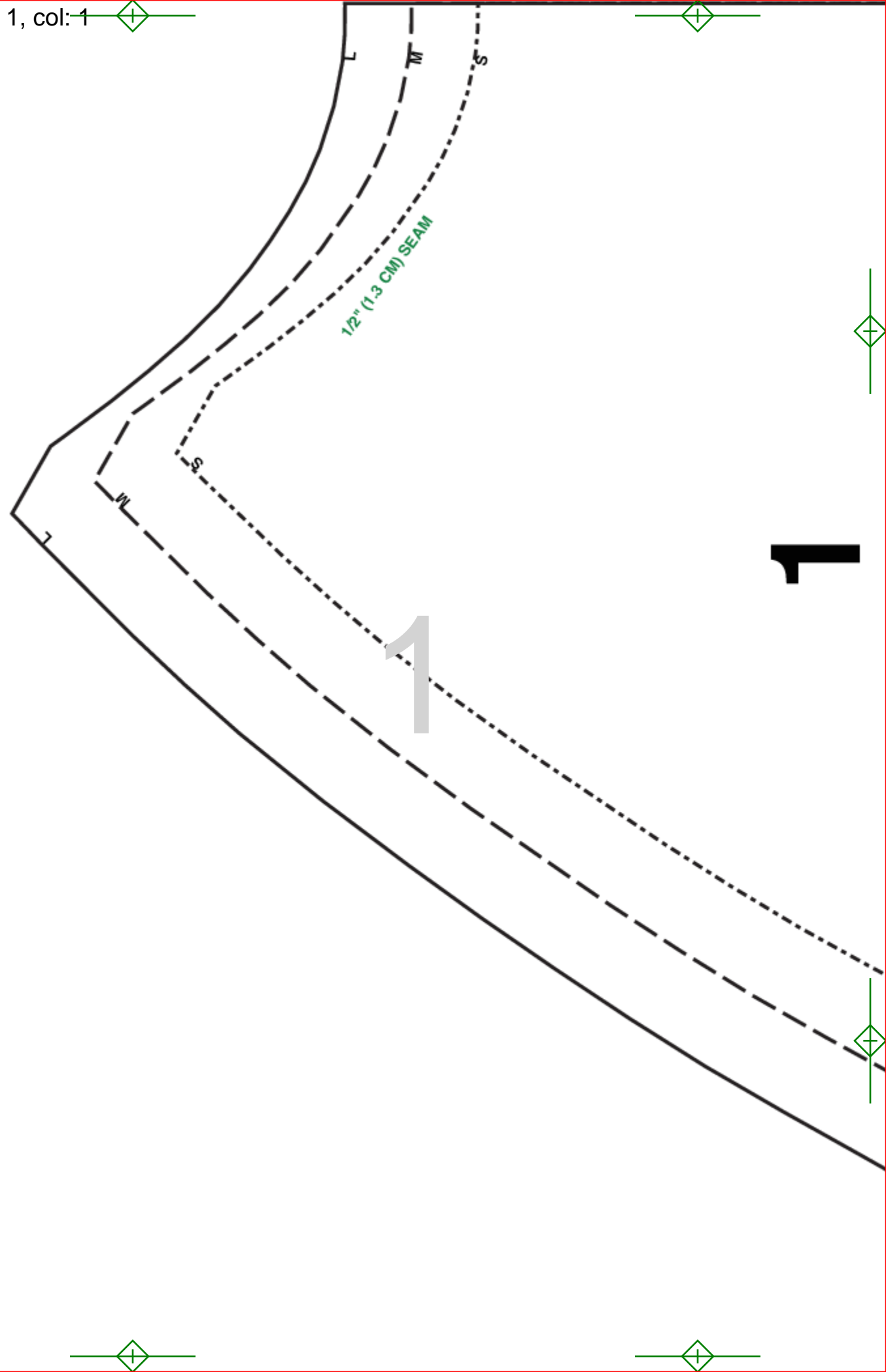


row: 1, col: 1



FRONT
DEVANT
FRENTE
VORDERTEIL
DAVANTI

Cut 1 on fold

McCall's

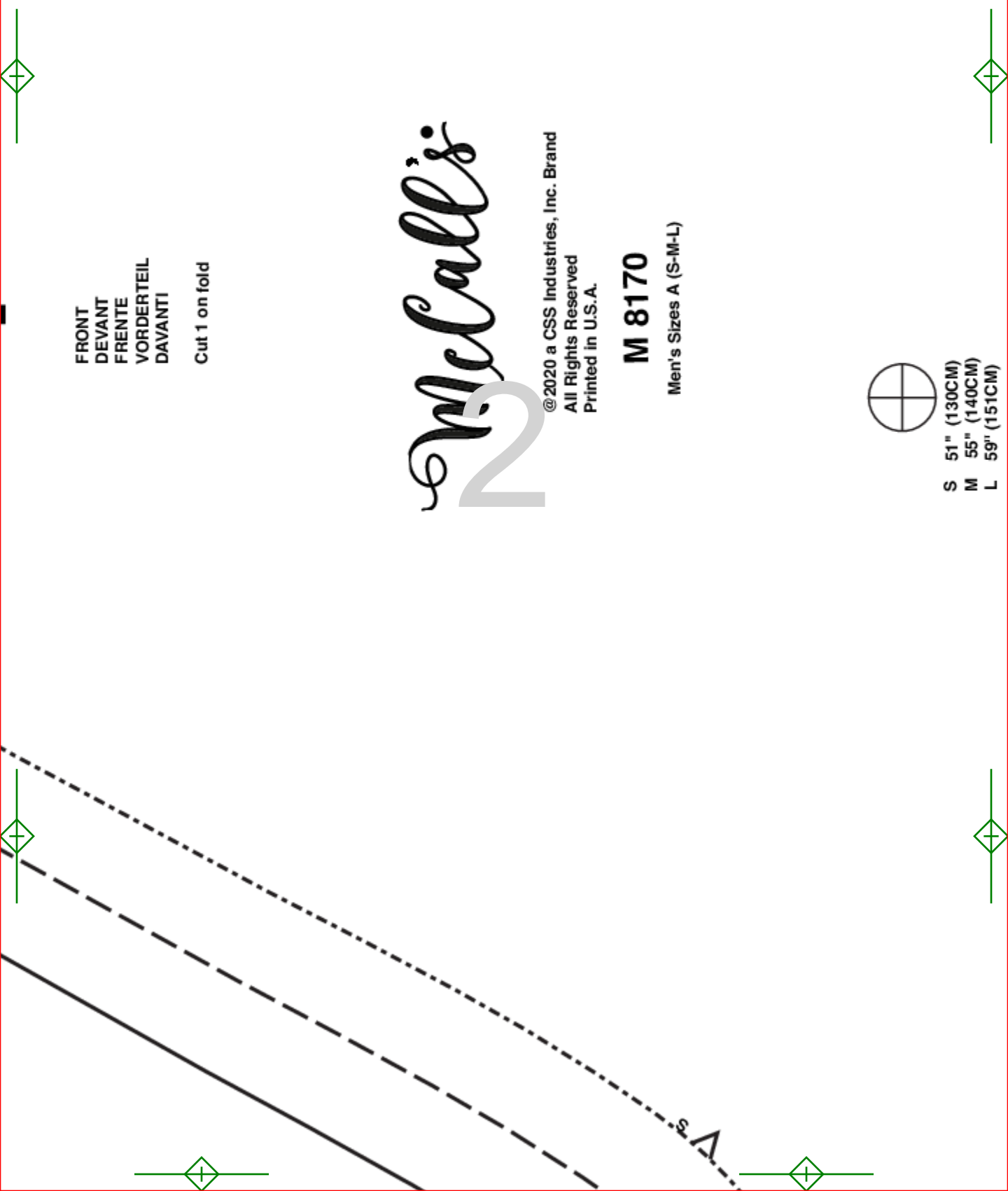
@2020 a CSS Industries, Inc. Brand
All Rights Reserved
Printed in U.S.A.

M 8170

Men's Sizes A (S-M-L)



S 51" (130CM)
M 55" (140CM)
L 59" (151CM)



L 59" (151CM)

LENGTHEN OR SHORTEN HERE

3

WAISTLINE



row: 1, col: 4



4





5





6



7

HEM 1 1/4" (3.2 CM)

LENGTHEN OR SHORTEN HERE





8



9

3

SLEEVE
MANCHE
MANGA
ÄRMEL
MANICA

Cut 2

McCall's

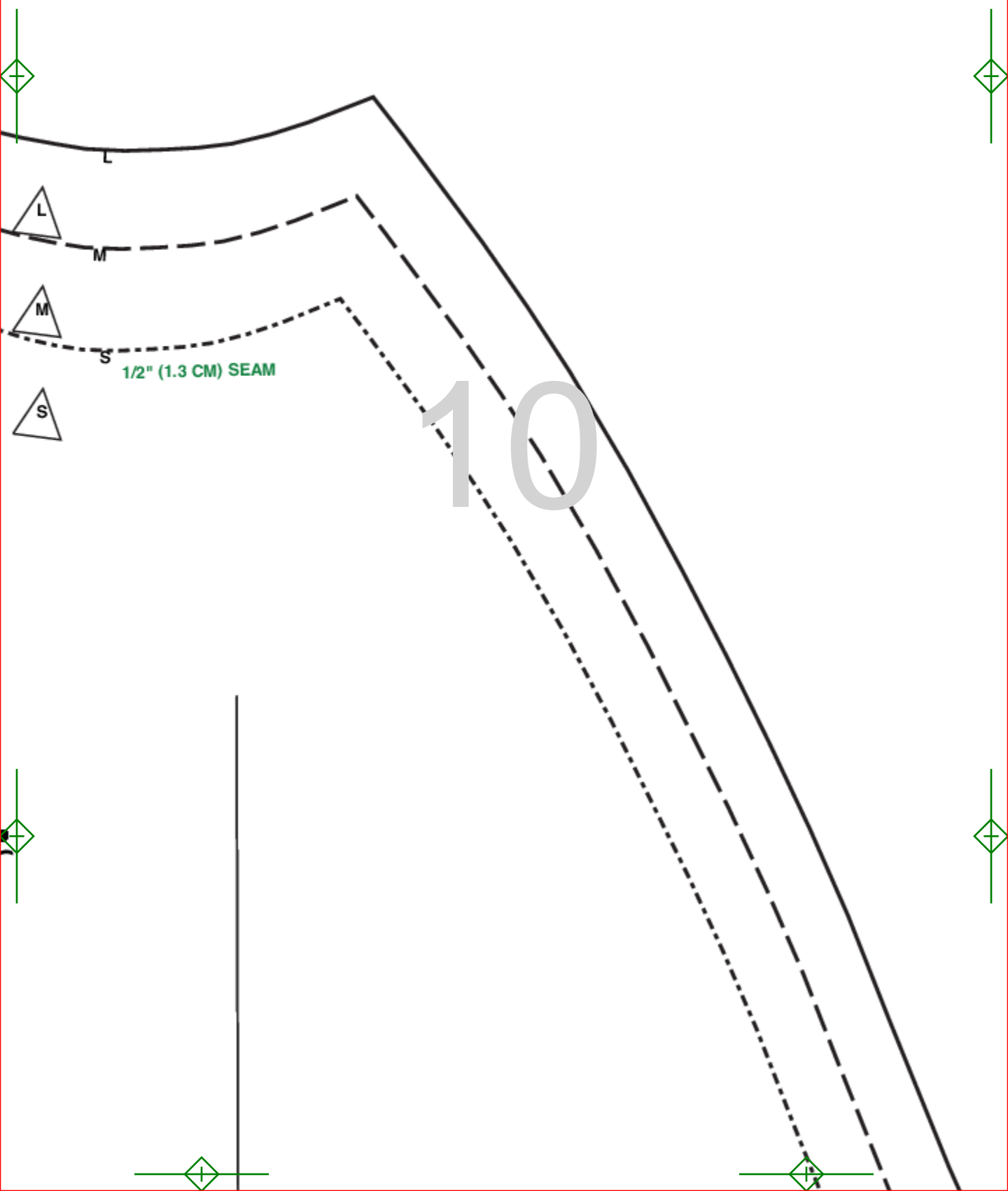
M 8170

Men's Sizes A (S-M-L)

L

M

S





11





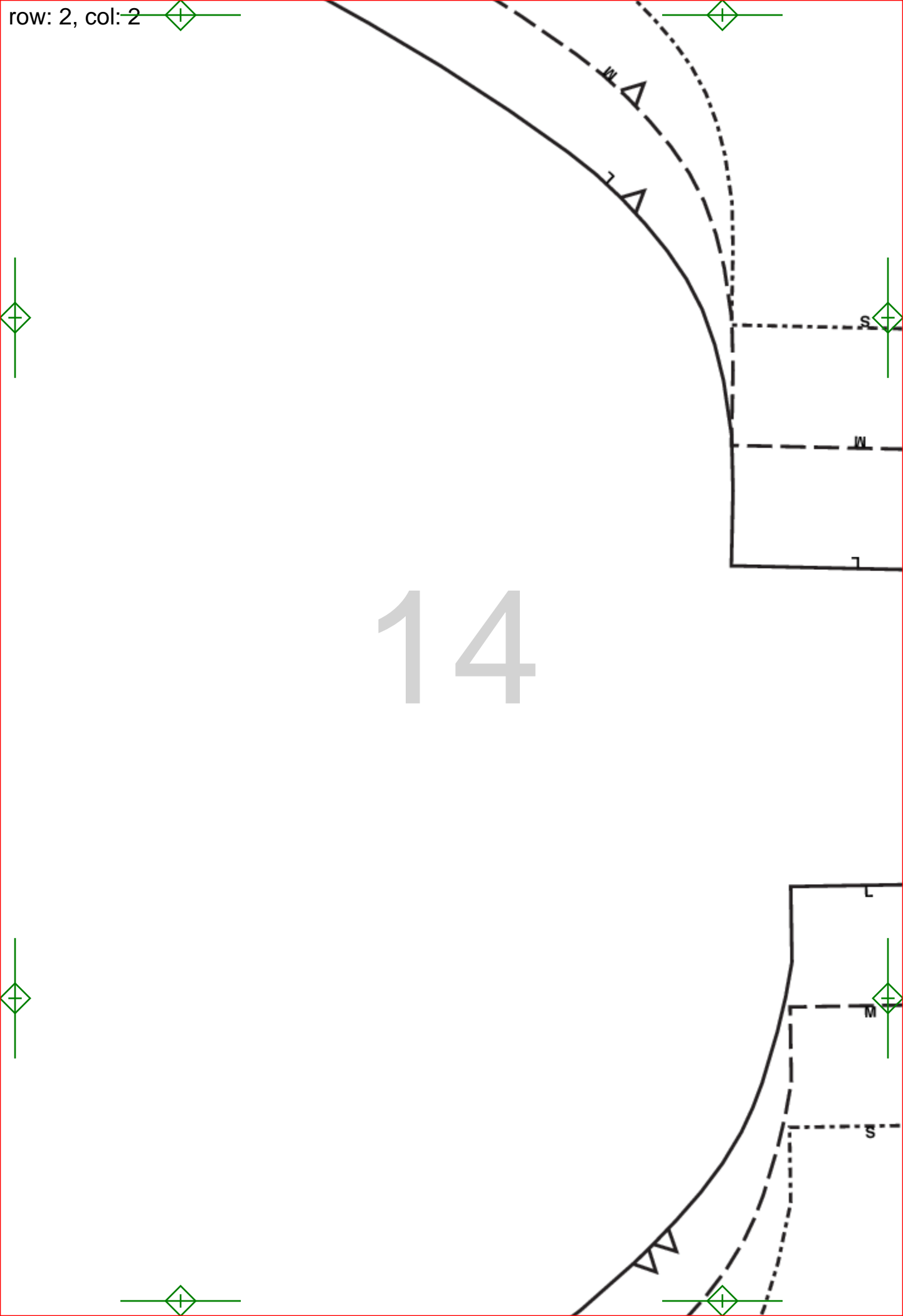
12



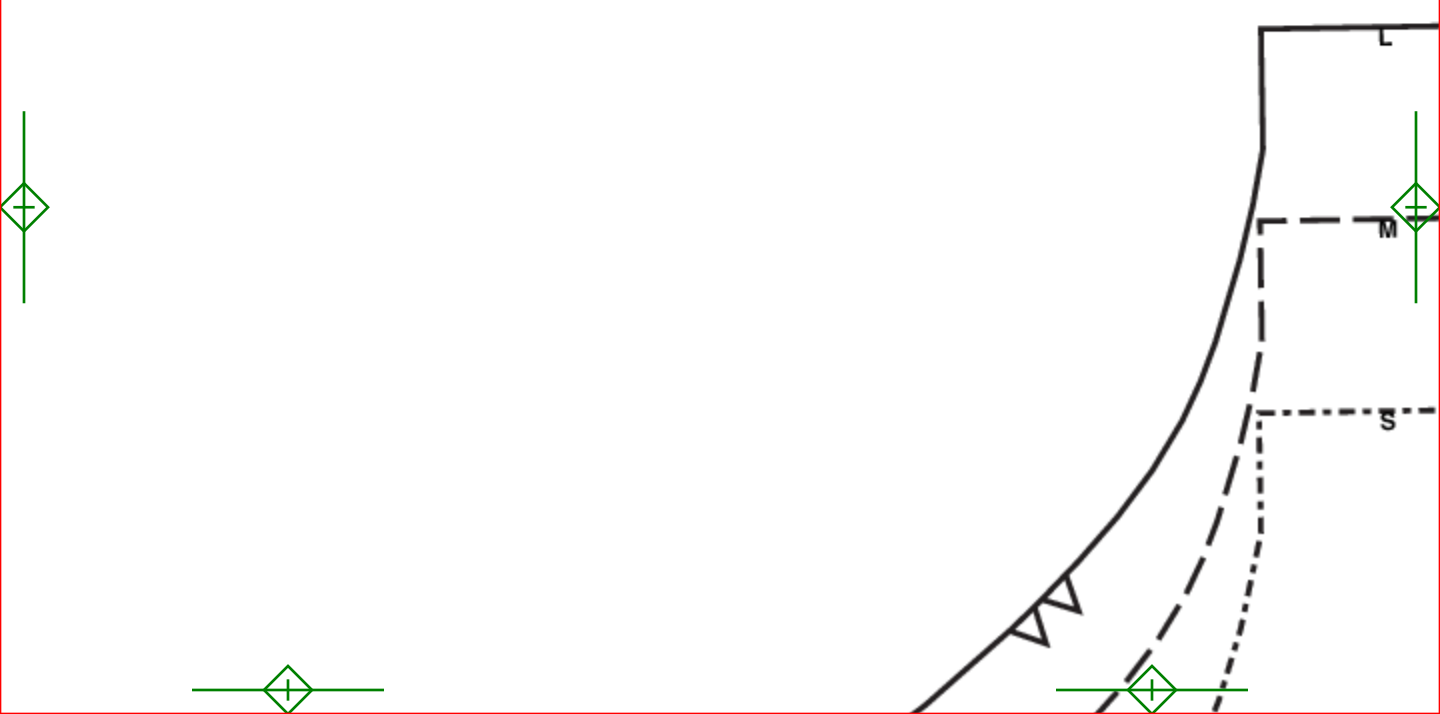


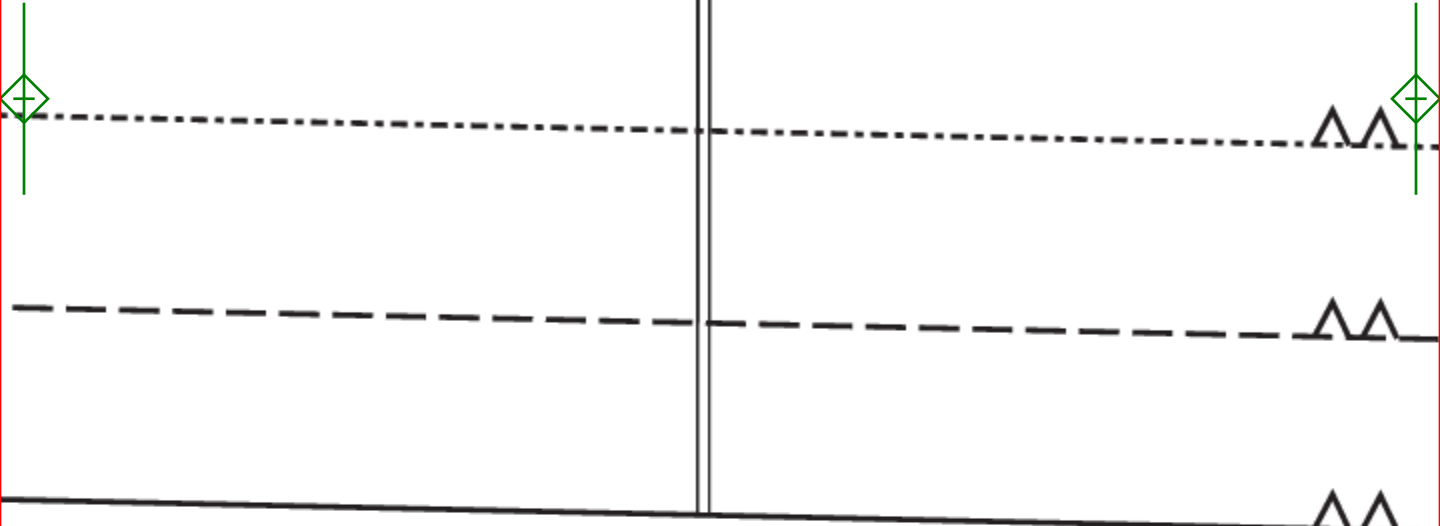
13



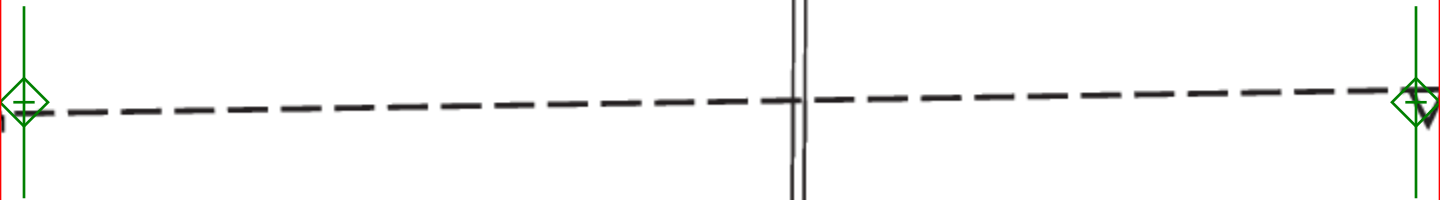
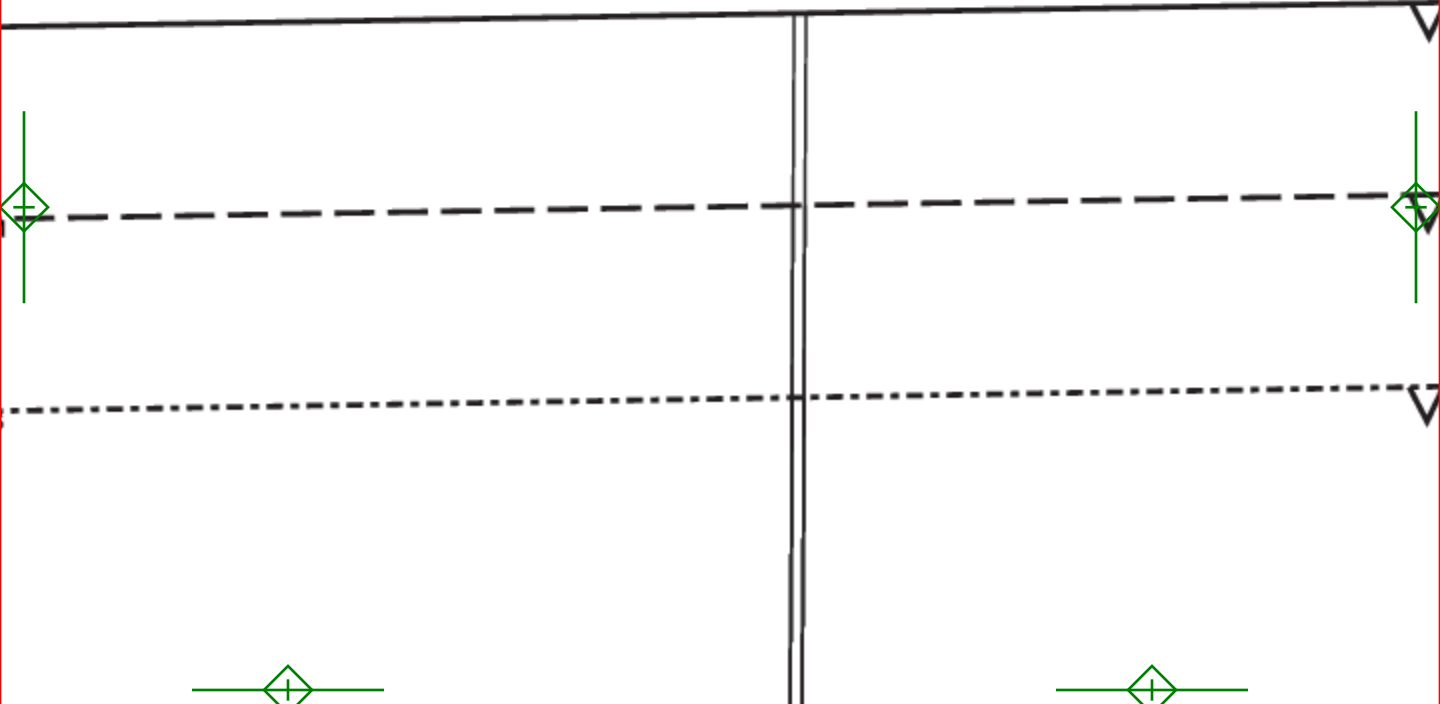


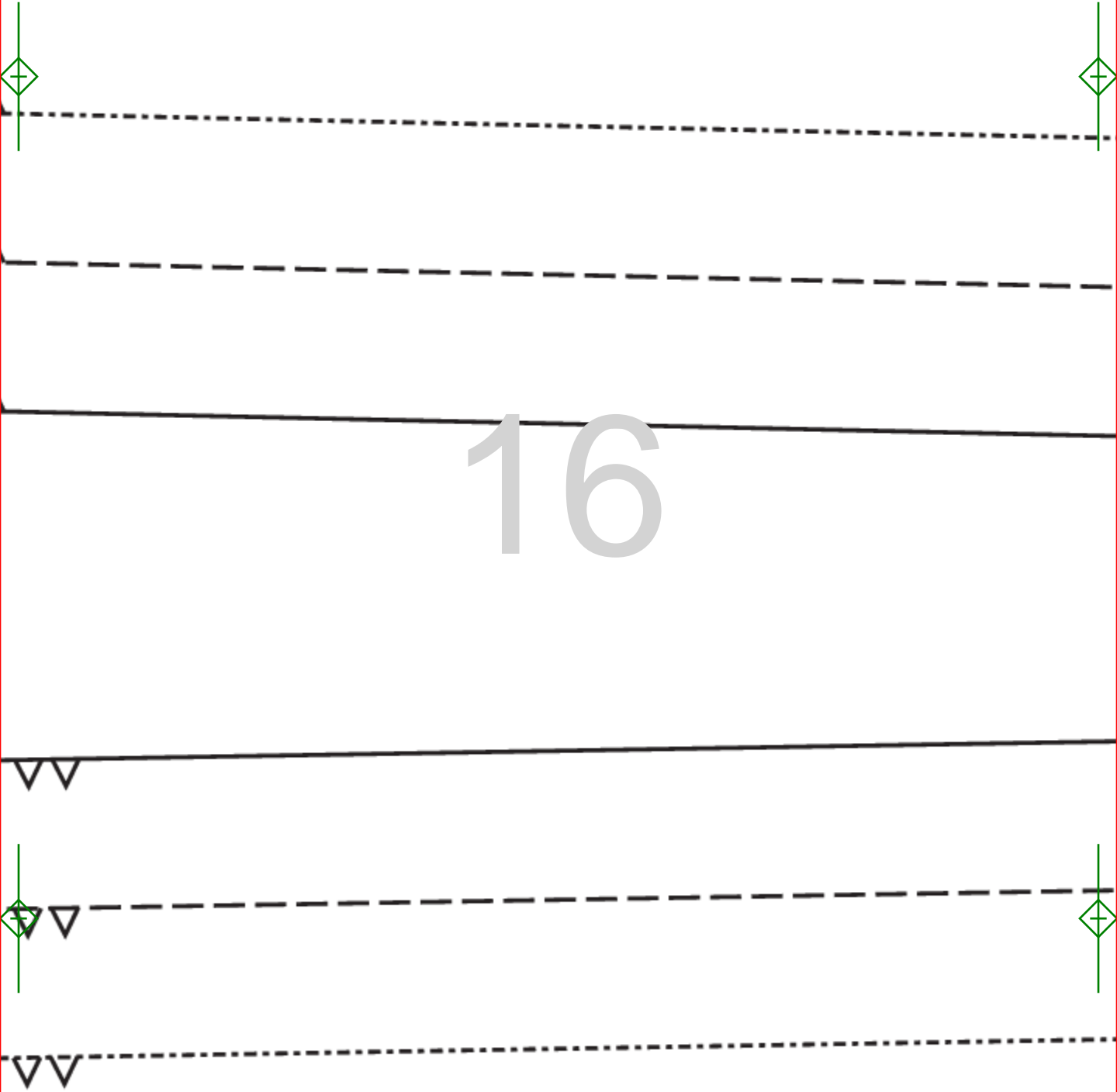
14

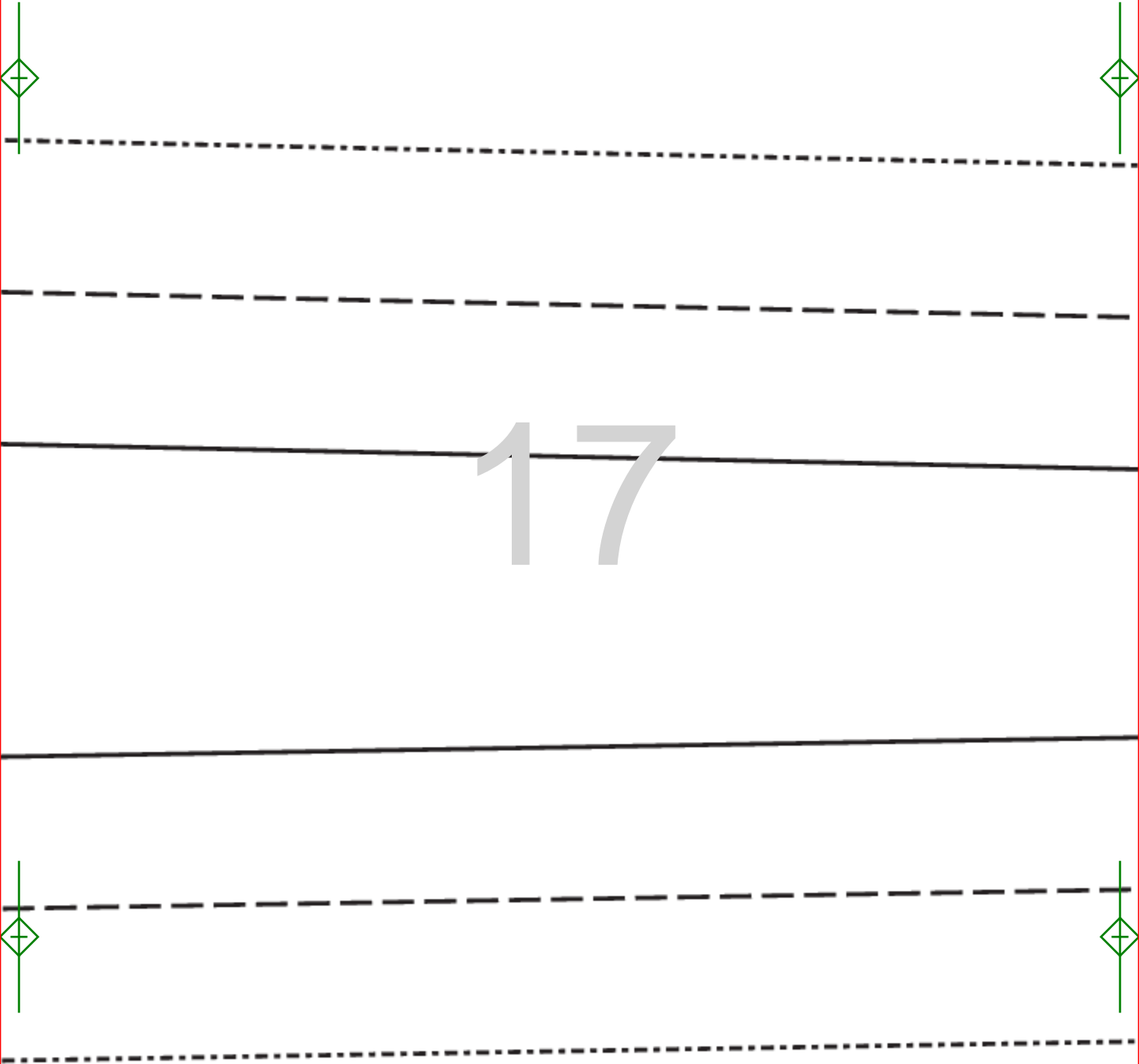




15







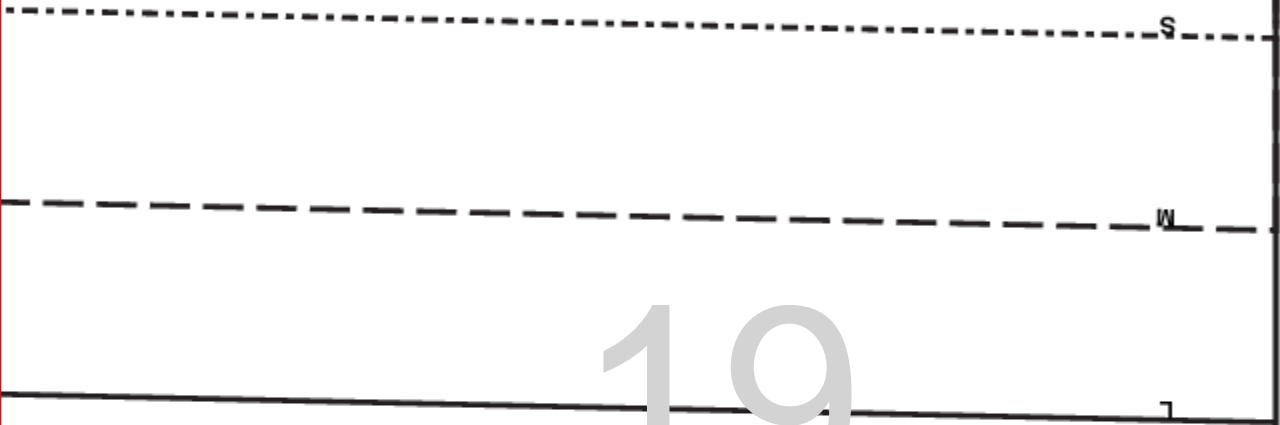
17



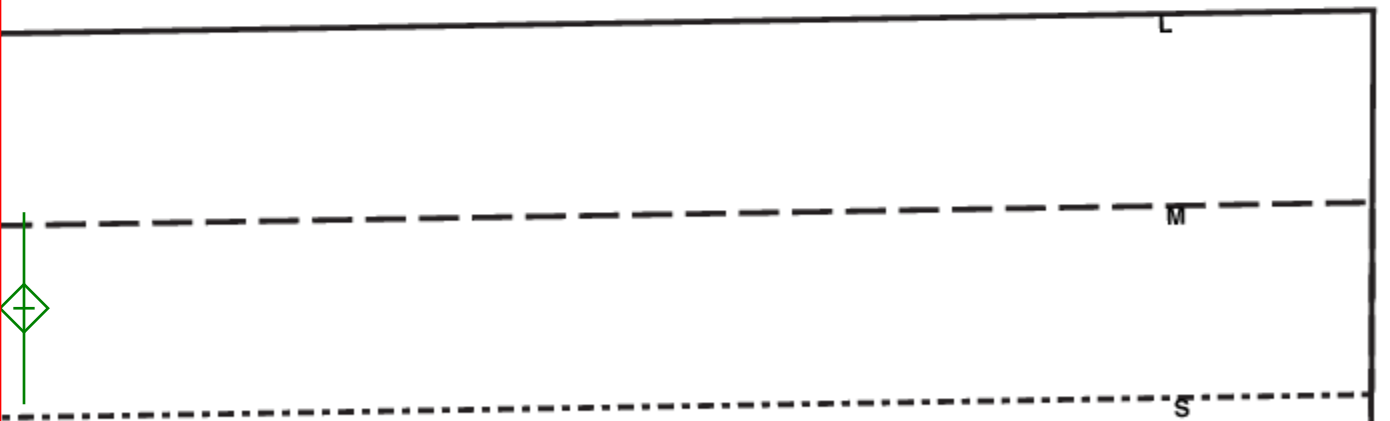


18

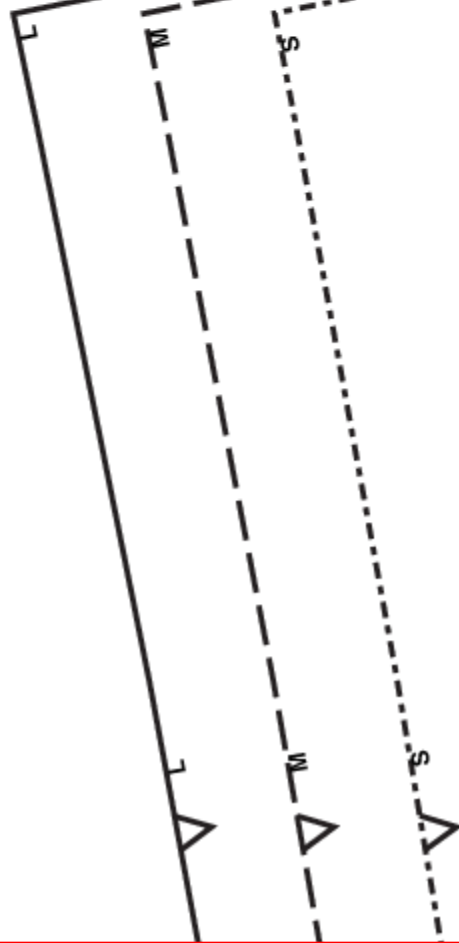




19



20



row. 2, col: 9

21

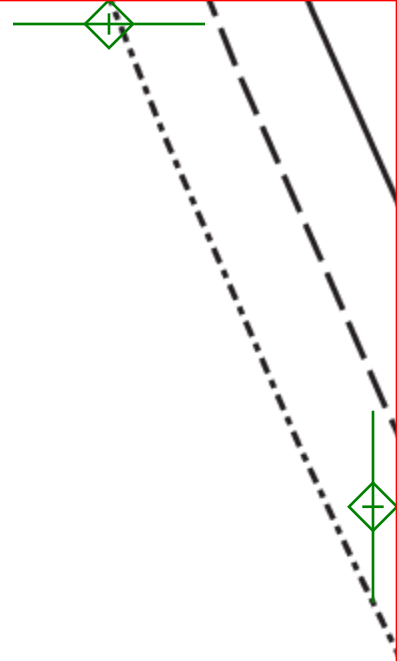
S 21" (530mm)
M 21 1/2" (546mm)
L 22" (559mm)

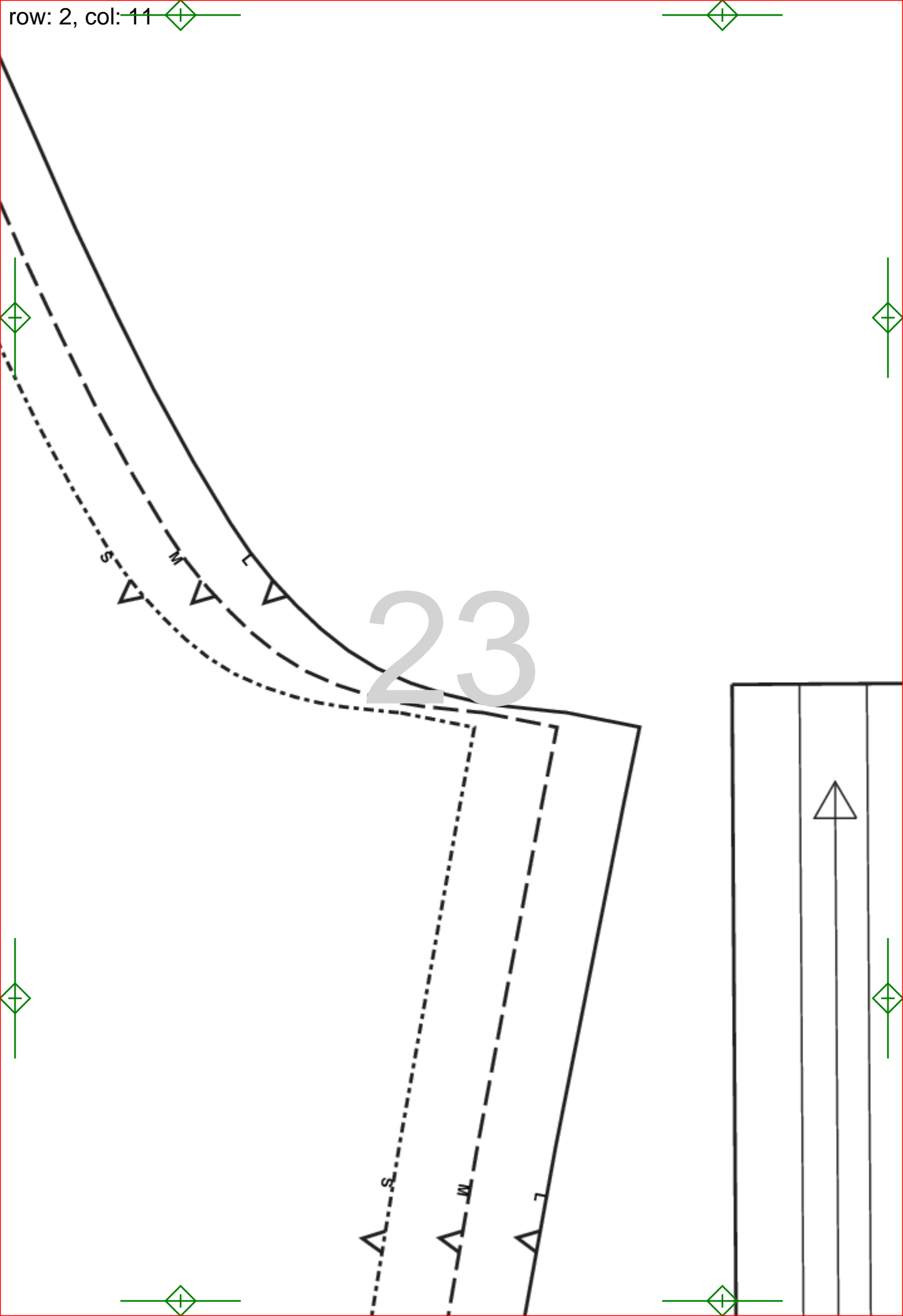
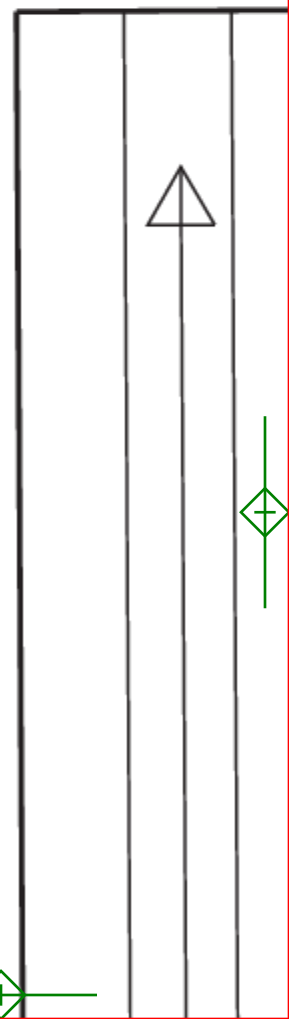
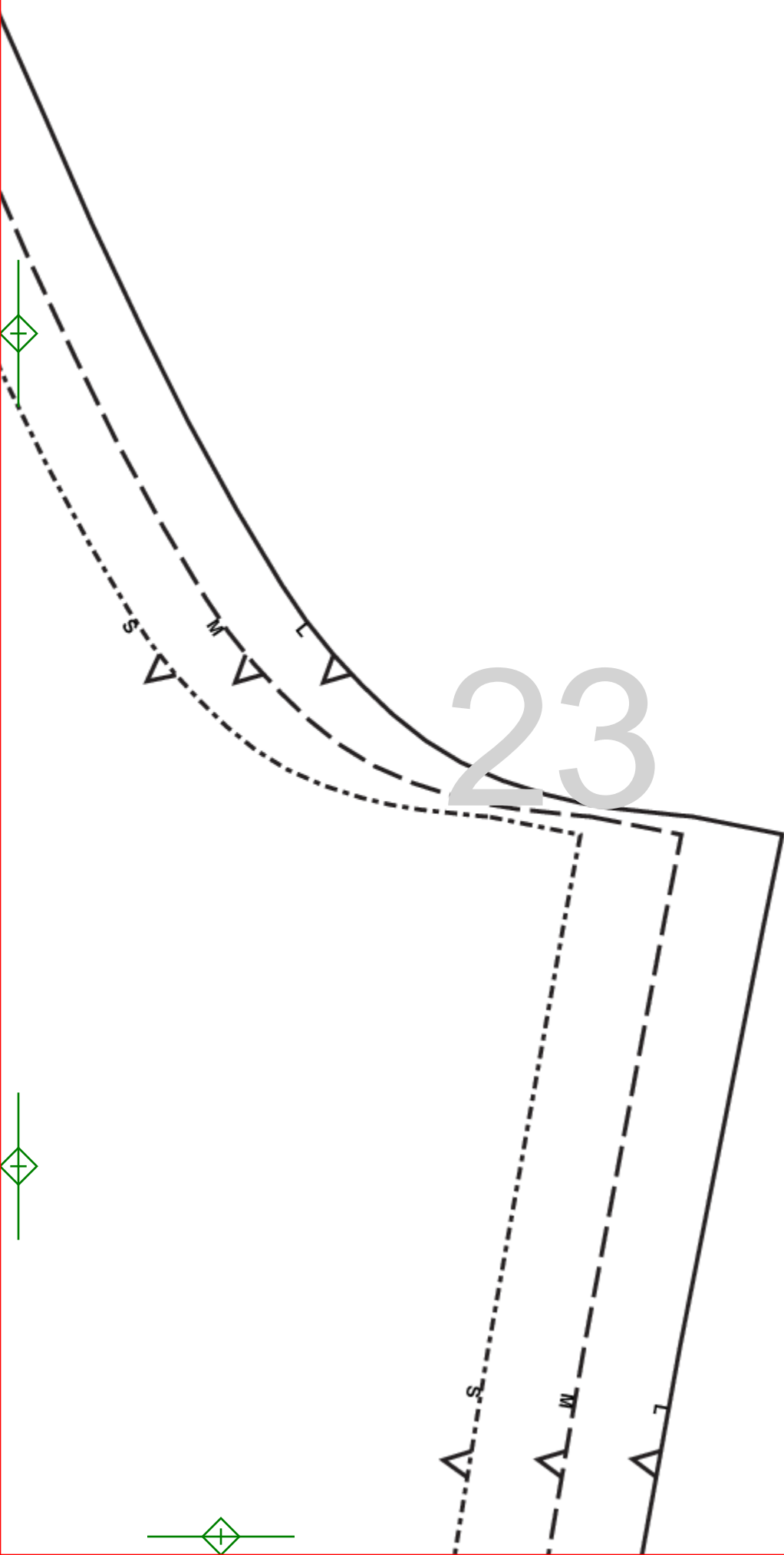
GRAINLINE

22



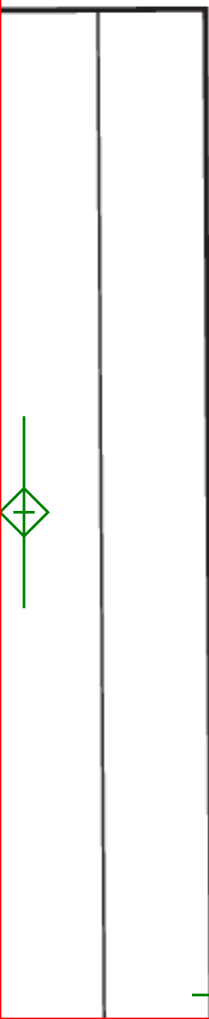
(53CM)
1/2" (54CM)
(56CM)

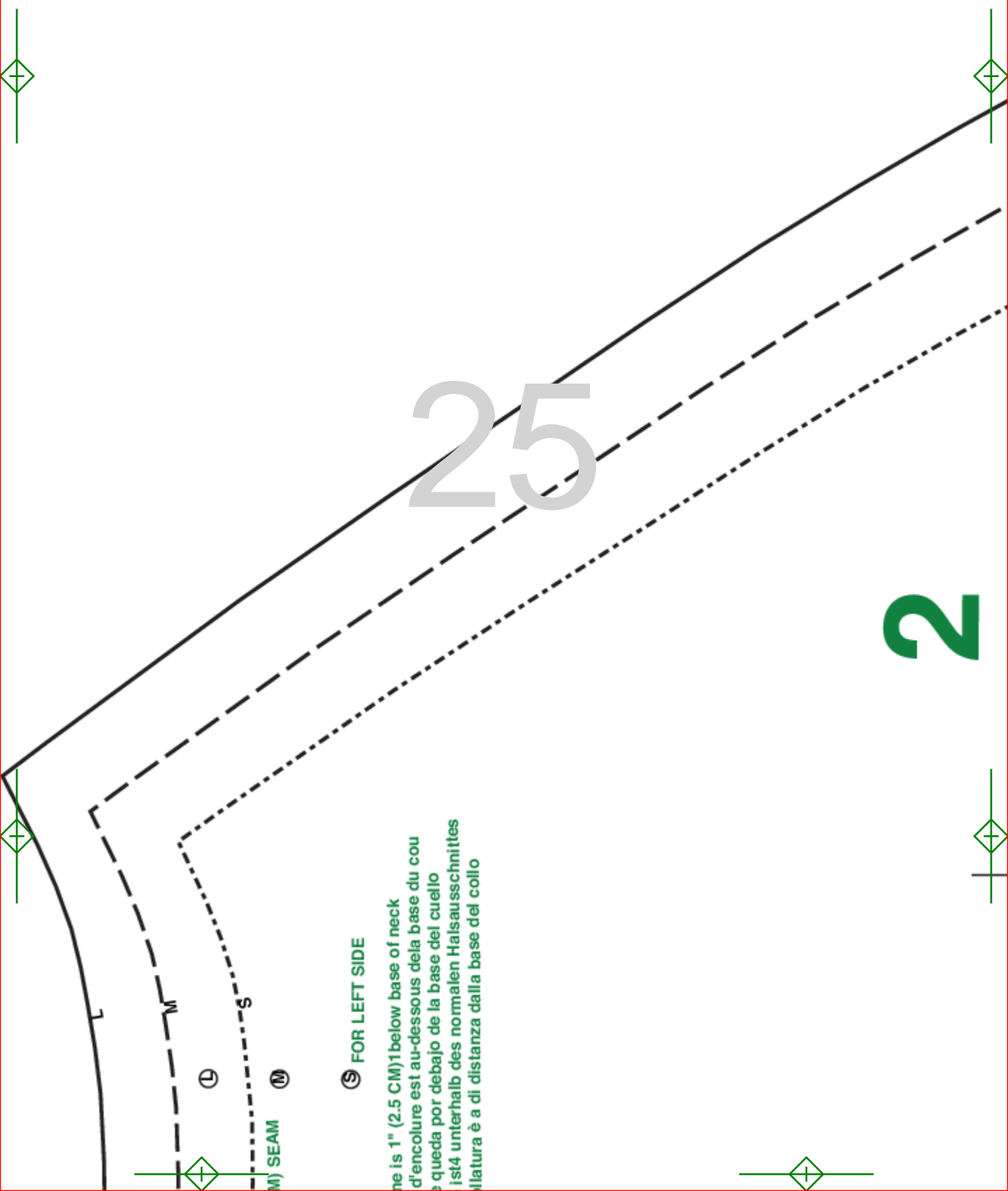






24





FOR LEFT SIDE

ne is 1" (2.5 CM) below base of neck
 d'encolure est au-dessous de la base du cou
 e queda por debajo de la base del cuello
 ist4 unterhalb des normalen Halsausschnittes
 Matura è a di distanza dalla base del collo

M) SEAM

L

M

S

25

2

**BACK
DOS
ESPALDA
RÜCKENTEIL
DIETRO**

Cut 2

McCall's
M8170
Men's Sizes A (S-M-L)

GRAINLINE

Ⓛ Ⓜ Ⓢ

FOR LEFT SIDE
POUR COTE GAUCHE
PARA COSTADO IZQUIERDO
FÜR LINKE SEITE
PER LATO SINISTRO

Ⓛ Ⓜ



27

LENGTHEN OR SHORTEN HERE



Ⓜ

Ⓢ

FOR LEFT SIDE





28





29





30



31

HEM 1 1/4" (3.2 CM)

LENGTHEN OR





32



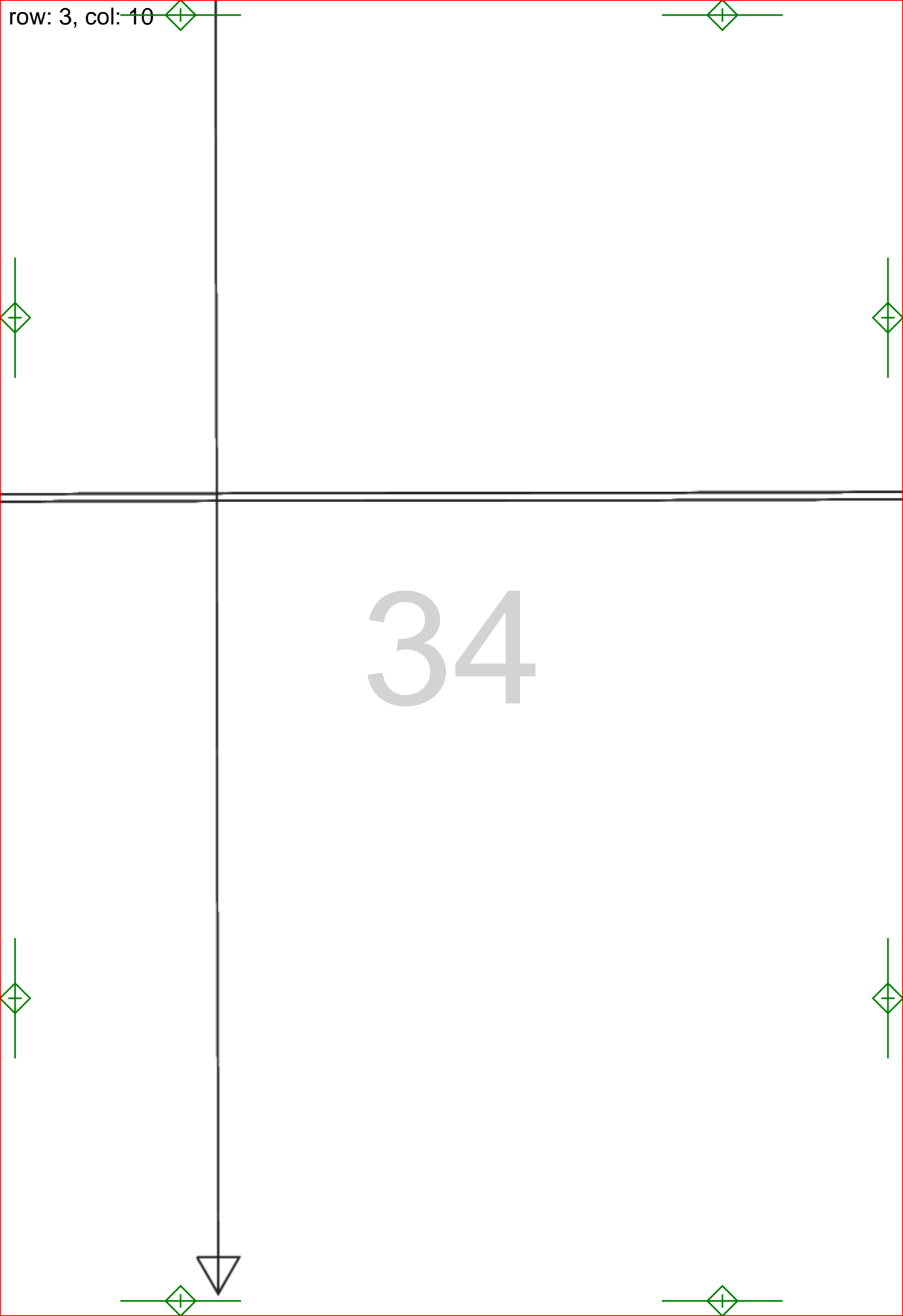


LENGTHEN OR SHORTEN HERE

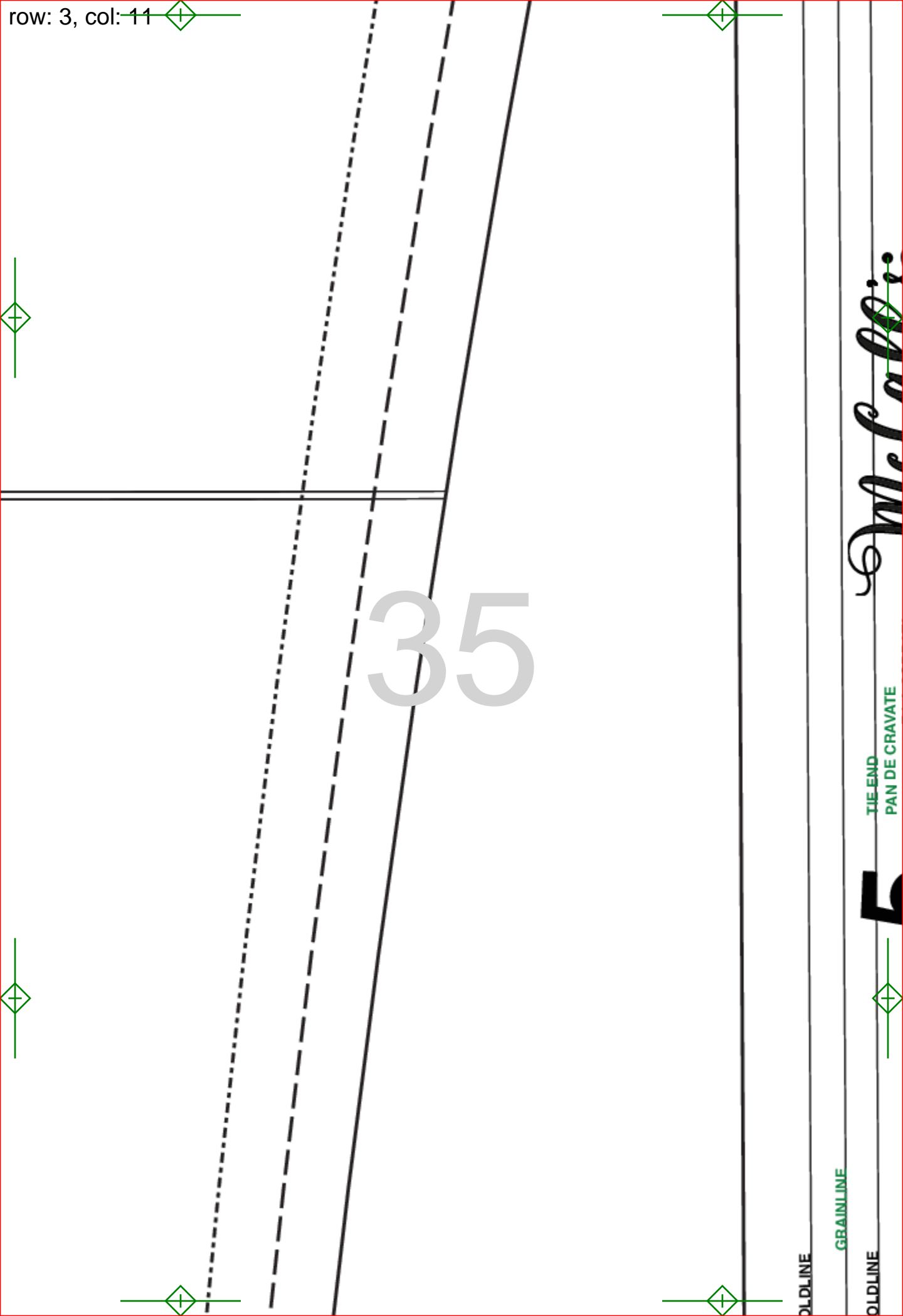
33



row: 3, col: 10



34



McCall's

TIE-END
PAN DE CRAVATE



OLDLINE

GRAINLINE

OLDLINE

5 *McCall's*

PAN DE CRAVATE
EXTREMO DE LA CORBATA
ENDE
PUNTE CRAVATTA

M 8170

Men's Sizes A (S-M-L)

Cut 6

GUIDE FOR ELASTIC
GUIDE POUR ELASTIQUE
GUIA PARA EL ELASTICO
MARKIERUNGSBAND (GUMMIBAND)
GUIDA PER L'ELASTICO

McCall's

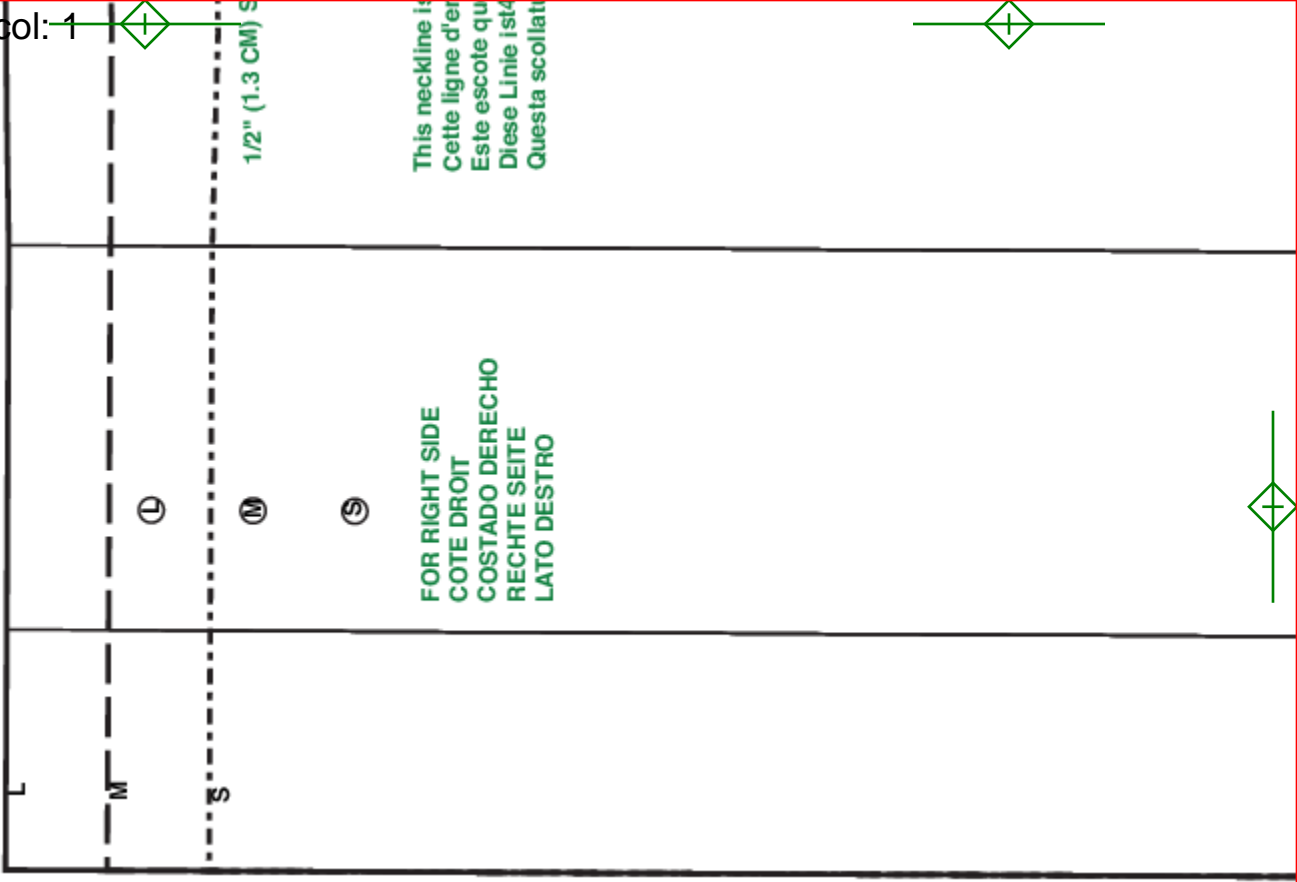
M 8170

Men's Sizes A (S-M-L)

Cut 2



36



37

CENTER BACK

FOR RIGHT SIDE

FOLDLINE

38



WAISTLINE



9

FOR RIGHT SIDE



39





40





41





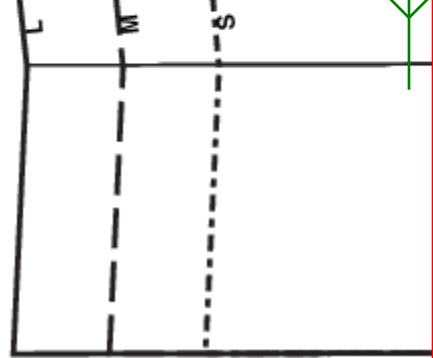
42





43





44





FOLDL

45

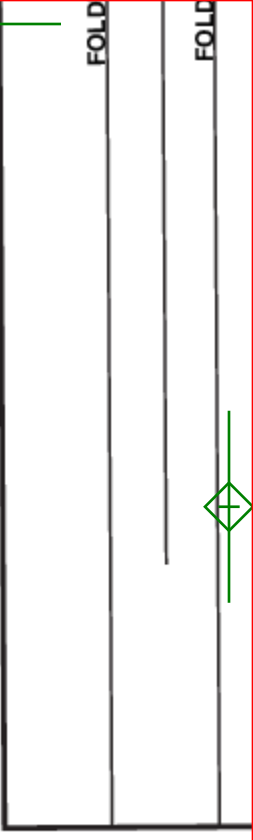
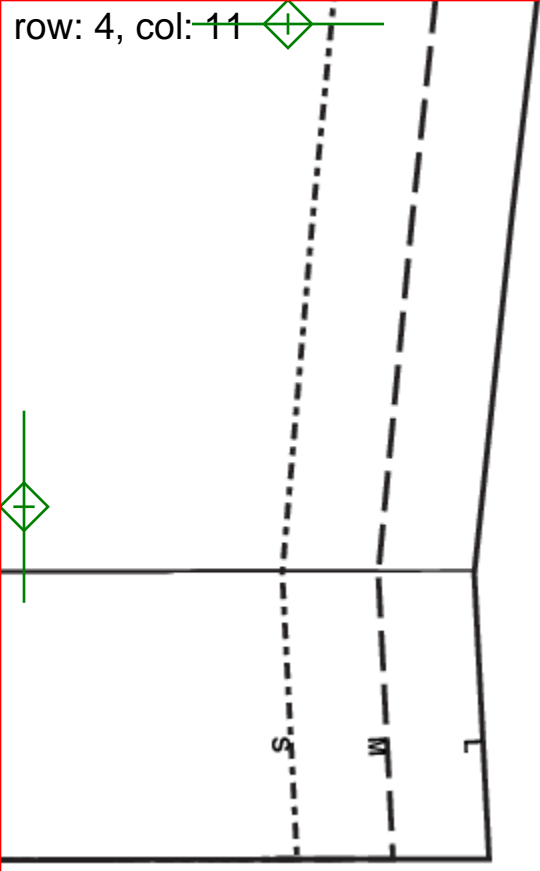




LDLINE

46





47



