

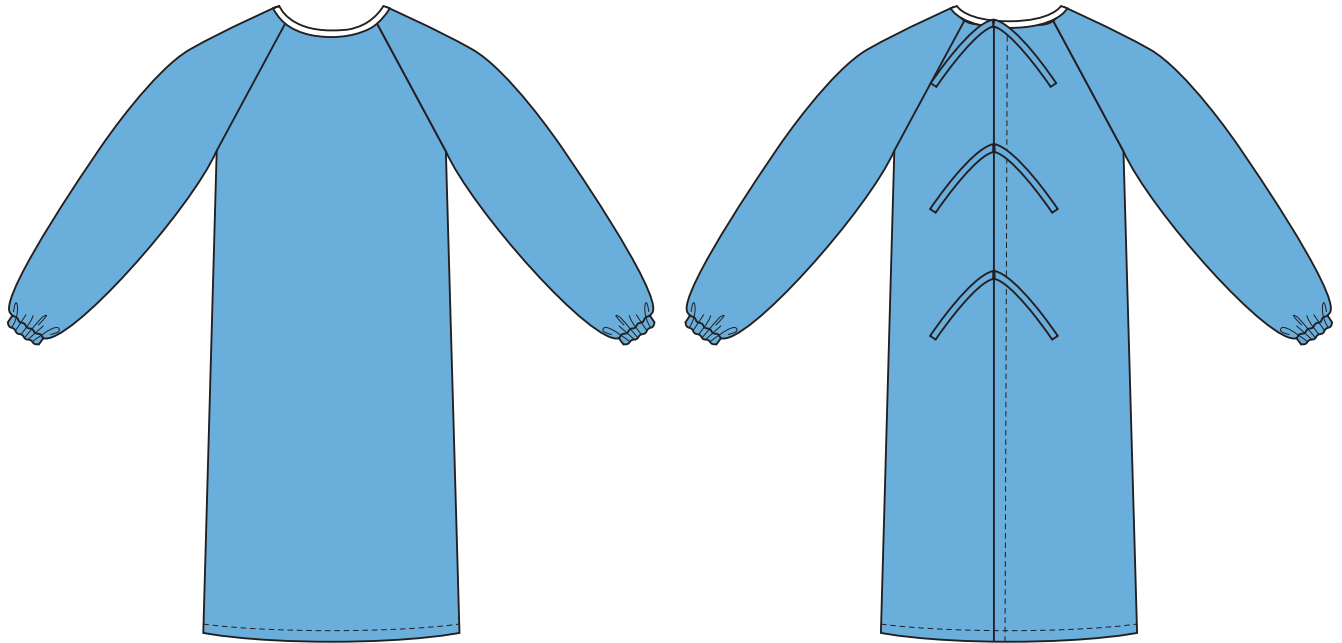


PDF PATTERNS

M8170

# McCall's®

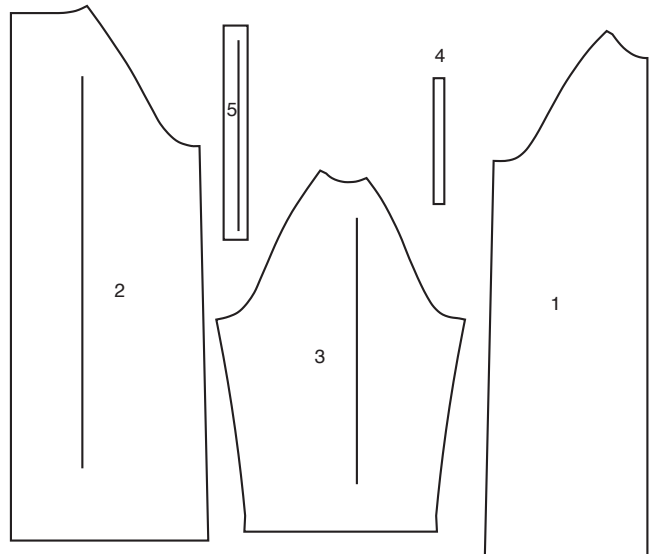
## MEDICAL GOWN



### PIECES (5)

#### MEDICAL GOWN

- 1 FRONT
- 2 BACK
- 3 SLEEVE
- 4 GUIDE FOR ELASTIC
- 5 TIE END



### THINGS YOU'LL NEED

#### NOTIONS

- › 1 yd. of 1"(2.5cm) wide Elastic
- › One package of 1/2"(1.3cm) wide Double Fold Bias Tape.

#### SUGGESTED FABRICS

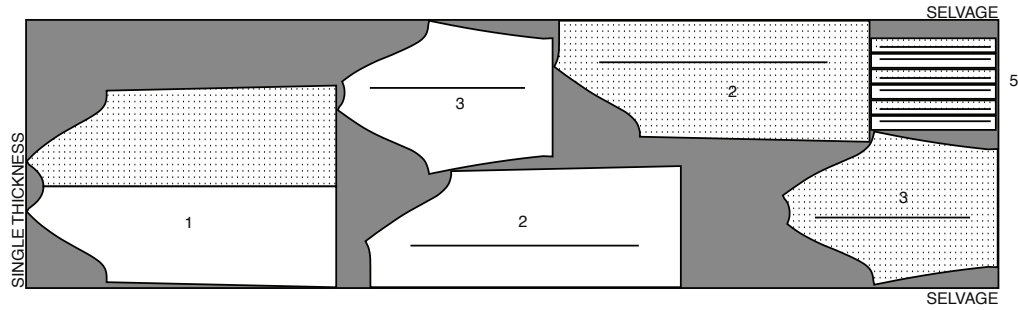
- › Cotton and Cotton Blends.

COMMUNITY



## CUTTING INFO

USE PIECES: 1,2,3,5  
 (PIECE 4 IS GUIDE FOR ELASTIC)  
 ALL SIZES



### YARDAGE

SIZES	SMALL	MEDIUM	LARGE	
<b>SUB SIZES</b>	<b>(34-36)</b>	<b>(38-40)</b>	<b>(42-44)</b>	
45"	3¾	3⅞	4½	in.

### BODY MEASUREMENTS

SIZES	SMALL	MEDIUM	LARGE	
<b>SUB SIZES</b>	<b>(34-36)</b>	<b>(38-40)</b>	<b>(42-44)</b>	
<b>CHEST</b>	34-36	38-40	42-44	in.
<b>WAIST</b>	28-30	32-34	36-39	in.
<b>HIP</b>	35-37	39-41	43-45	in.

### FINISHED GARMENT MEASUREMENTS

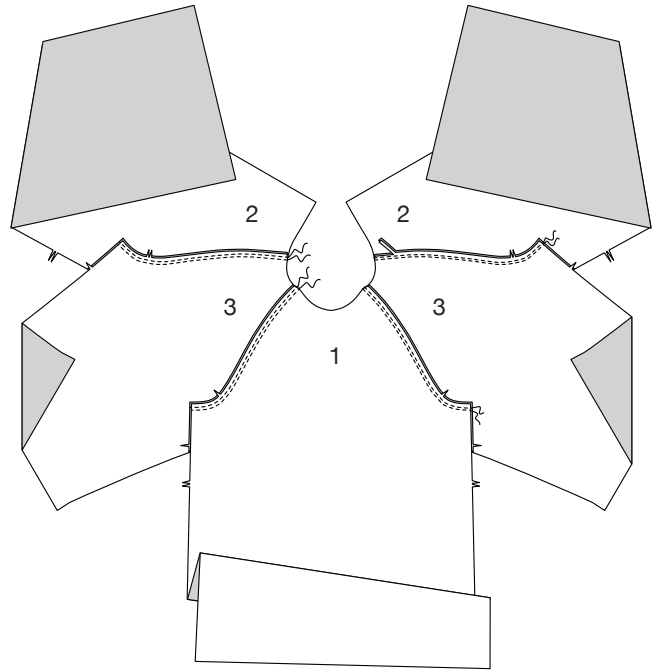
SIZES	SMALL	MEDIUM	LARGE	
<b>SUB SIZES</b>	<b>(34-36)</b>	<b>(38-40)</b>	<b>(42-44)</b>	
<b>BACK WAIST LENGTH</b>	48	48½	49	in.

# MEDICAL GOWN

**NOTE: USE 5/8" (1.5 CM) SEAM ALLOWANCES UNLESS OTHERWISE INDICATED.**

## FRONT, BACK AND SLEEVE

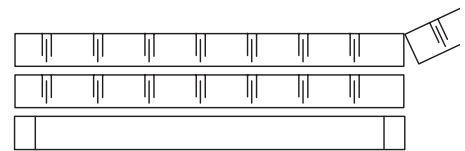
**1** Stitch FRONT (1) and BACK (2) to SLEEVE (3) at armhole edges, as shown. Stitch again 1/4" (6mm) away in seam allowances. Trim close to stitching. Turn seam toward sleeve.



**2** To form casing, turn lower edge of sleeve to inside on foldline. Turn under 1/8" (3mm) on raw edge; press. Stitch close to inner edge.

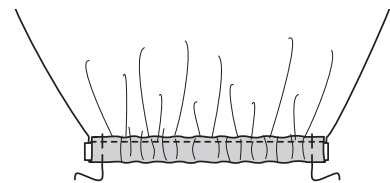


**3** Cut two pieces of 1" (2.5cm) wide elastic, the length of GUIDE FOR ELASTIC (4).



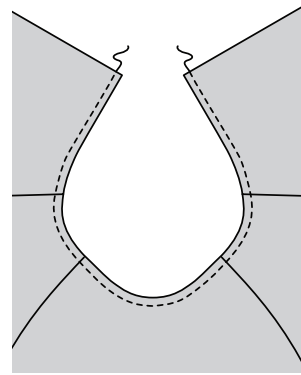
4

**4** Insert elastic through casing, having ends even with raw edges. Baste across casing securely.

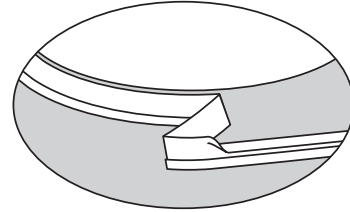


## NECK BINDING

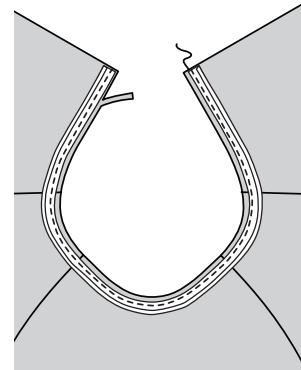
**5** To prevent neck edge from stretching, stitch  $3/8"$  (1 cm) from raw edge.



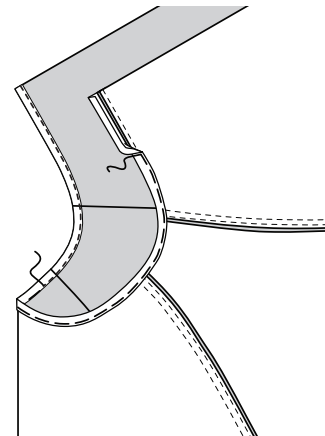
**6** For binding, open out one folded edge of bias tape; press out crease and reshape tape to match curve of neckline by pressing lightly.



**7** Pin bias tape to neck edge, placing crease along  $1/2"$  (1.3 cm) seamline. Stitch along crease. Trim gown seam allowance even with bias tape.

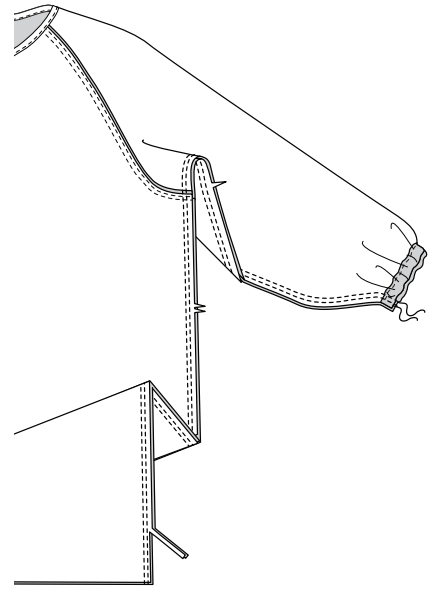


**8** Turn bias tape to inside along fold, encasing seam allowance. Press. Baste folded edge in place covering stitching. On outside, stitch along basting on binding.

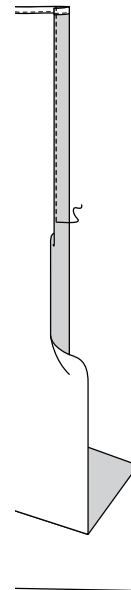


## FINISHING

- 9** Pin front and back together at sides; pin sleeve edges together. Stitch in one continuous seam. Stitch again  $1/4"$  (6mm) away in seam allowances. Trim close to stitching. Turn seam toward back.

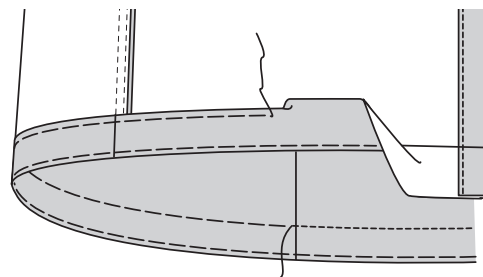


- 10** Fold back opening edge to inside along foldline. Turn in  $1/4"$  (6mm) on raw edge; press. Stitch close to pressed edge.



- 11** Turn up hem. Baste close to fold. Trim hem to an even width. Turn under  $1/4"$  (6mm) on raw edge; press. Baste close to upper pressed edge.

Stitch hem in place along upper basting, as shown.



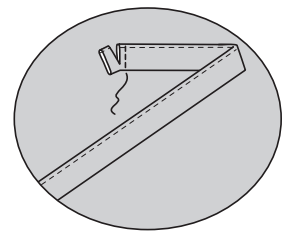
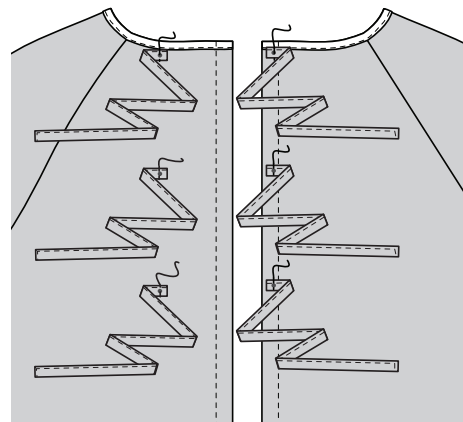
- 12** With wrong sides together, turn in one end of each TIE END (5); press.



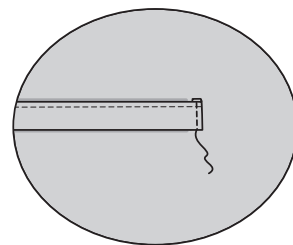
- 13** Fold each tie end along outer foldlines. Press. Fold in half lengthwise, wrong sides together, along remaining foldline; press. Stitch along edge of end and long edge, as shown.



- 14** Pin tie ends to back, centering unfinished end  $1/2"$  (1.3cm) over symbols, as shown. Stitch. Trim seam allowance to  $1/4"$  (6mm), being careful not to cut garment.



- 15** Turn tie end over seam. Press. Stitch, as shown, through all thicknesses, encasing seam allowances.





# Congrats!

You've completed your sewing adventure!

---

## SHARE YOUR look!



Post your pattern and tag us at  
@McCALLPATTERNCOMPANY and use #MCCALLSPATTERNS  
for a chance to be featured on our social media!

Look for more McCall's PDF patterns at [McCALLPATTERN.COM](https://www.mccallpattern.com)



Showing commUNITY support in a time of crisis. #wereinthistogether 

 1-800-255-2762

McCall's Patterns is part of Design Group Americas, Inc. family of brands  
© 2020 Copyright IG Design Group PLC. | All Rights Reserved  
Sold for individual home use only and not for commercial or manufacturing purposes.